

# Alaska Natural Heritage Program

## Conservation Status Report

---

### *Anthophora terminalis* – Cresson, 1869

*Synonyms:* *Anthophora bidentata* (Provancher, 1882); *Anthophora furcata neofurcata* (Sladen, 1919); *Anthophora furcata sperryi* (Cockerell, 1898); *Anthophora furcata syringae* (Cockerell, 1898); *Anthophora furcata terminalis* Cresson, 1869; *Anthophora nubiterrae* Viereck, 1903; *Anthophora nudata* Provancher, 1888; *Anthophora pernigra* Cresson, 1879; *Anthophora subglobulosa* Provancher, 1888; *Ceratina bidentata* Provancher, 1882; *Clisodon neofurcata* Sladen, 1919; *Clisodon terminalis* (Cresson, 1869); *Clisodon terminalis sperryi* Cockerell, 1937; *Podalirius sibiricus* Gussakovsky, 1932; *Podalirius syringae* Cockerell, 1898

*Comments:* DiscoverLife distribution map (Ascher and Pickering 2023) shows a subspecies in Asia, however, these records do not appear on the GBIF distribution map (GBIF 2023).

**Common Name:** Red-tipped digger bee

**ELCODE:** IIHYM36070

**Taxonomic Serial No.:** 698937

***Report last updated – August 31, 2023***

---

### Conservation Status

G5 S4

### Occurrences, Range

*Number of Occurrences:* 31 occurrences, 53 voucher records (University of Alaska Anchorage Entomology Collection; University of Alaska Museum Insect Collection; Denali National Park and Preserve Insect Collection; USDA-ARS Bee Biology and Systematics Laboratory), 1 observation record (iNaturalist).

*AK Range Extent:* 330,833 km<sup>2</sup>

*Occupancy 4 km<sup>2</sup> grid cells:* 32 occupied grids

*Nowacki Ecoregions:* Intermontane boreal, Alaska Range transition, Coastal forests

*North American Distribution:* This species has a fairly widespread known distribution across interior Alaska, parts of southcentral Alaska, and one record from southeast Alaska on the Chilkoot Trail (Figure 1).

Holarctic species. In North America, Alaska eastwards across Canada to Nova Scotia. In the lower United States, across many of the western states, from Washington, Oregon, and California west to Montana, Wyoming, Colorado, and New Mexico, across the Northern Plains

to the Great Lakes region, south to Iowa, Missouri, and Alabama, and north to Maine through many eastern states (Ascher and Pickering 2023).

## Ecology

*Habitat:* Occurrences in various habitat types, including steppe bluffs, sand dunes, rubble slopes, spruce forests, broadleaf forests, logged aspen stands, river edge, forb meadows, and tundra. There are also occurrences in human-disturbed locations such as an airstrip and on the UAF farm in Delta Junction.

*Host Plants:* *Astragalus alpinum*, *Chamerion*, *Hedysarum alpinum*, *H. boreale*, *Penstemon gormanii*

*Life History:* This is a solitary species but females sometimes nest in large aggregations. They actively excavate nests and have been recorded to tunnel into dead wood (including driftwood and stumps) as well as pithy stems, brood cells are lined and partitioned with chewed sawdust or pith (Satyshur and Orr 2020).

## Trends

*Short-term:* N/A, insufficient data

*Long-term:* N/A, insufficient data

## Threats

*Scope and Severity:* It has been found in four national parks and one national refuge, and few occurrences are from human-disturbed locations. Threat scope and severity are unknown.

## References

Ascher J.S. and J. Pickering. 2023. Discover Life bee species guide and world checklist (Hymenoptera: Apoidea: Anthophila). <https://www.discoverlife.org/> (accessed August 31, 2023)

Global Biodiversity Information Facility. <https://www.gbif.org>. GBIF occurrence download <https://doi.org/10.15468/dl.qdbe6u> (accessed April 20, 2021 and August 31, 2023)

Integrated Taxonomic Information System (ITIS). Available online: <https://www.itis.gov> (accessed August 31, 2023)

NatureServe Explorer. Available online: <https://explorer.natureserve.org/> (accessed August 31, 2023)

Satyshur, C.D. and M.C. Orr. 2020. Record of *Anthophora (Clisodon) terminalis* in a wooden trap-nesting block and comparison to available nesting information (Hymenoptera: Apidae). *Journal of Mellitology* 99:1-6.

University of Alaska Museum Insect Collection. <http://dx.doi.org/doi:10.7299/X75D8S0H> (records accessed March 8, 2023)

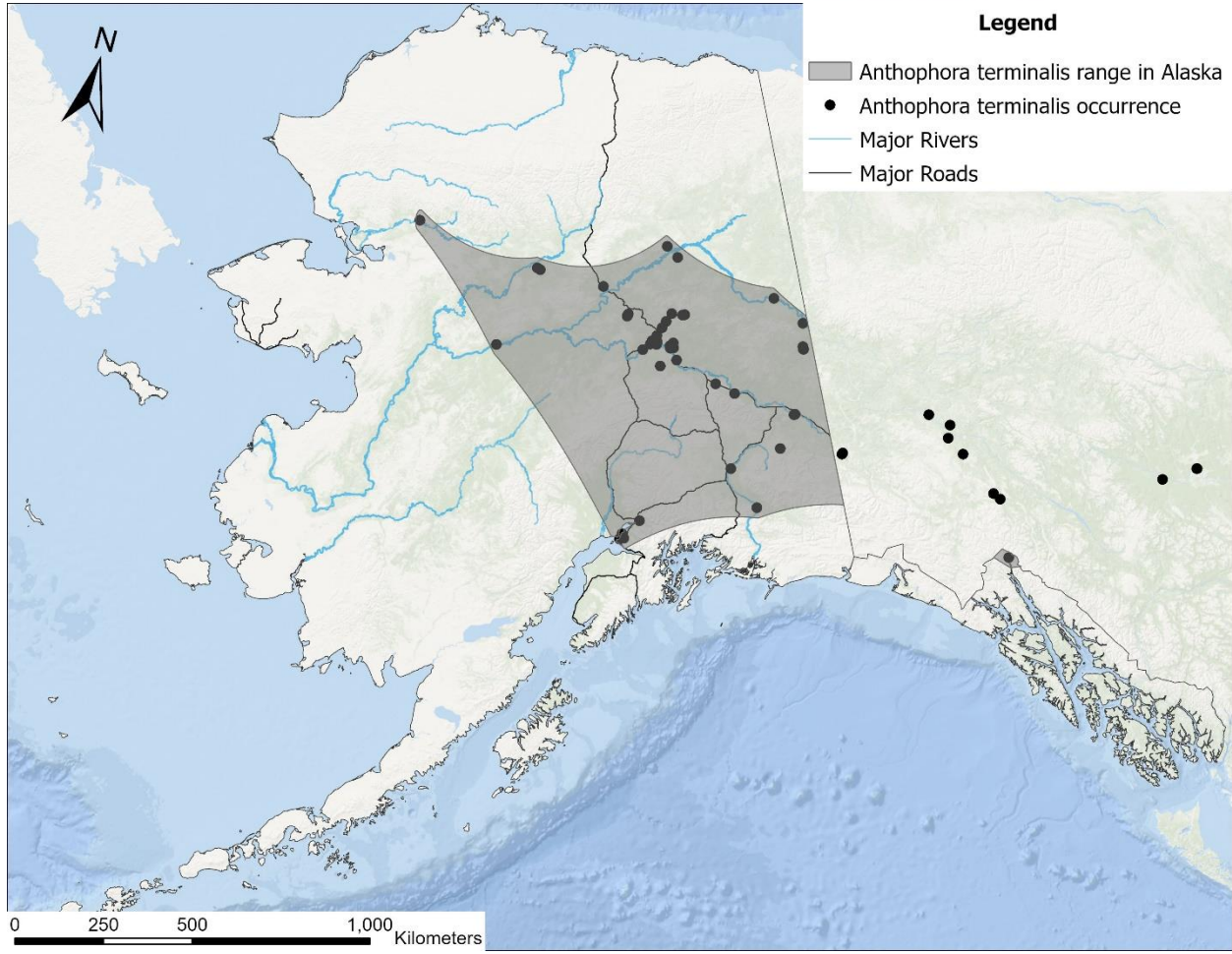


Figure 1 Range and occurrence of *Anthophora terminalis* in Alaska

### Photo Reference



Figure 2 © Copyright Laurence Packer 2014

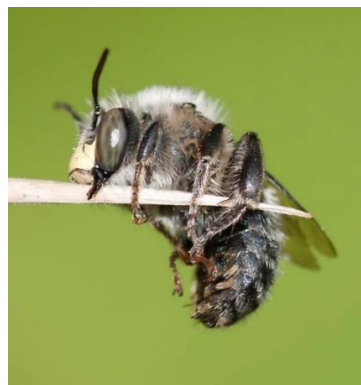


Figure 3 <a href="http://www.discoverlife.org">  
John and Jane Balaban / Discover Life </a>