

First report of grapevine dieback caused by *Lasiodiplodia theobromae* and *Neoscytalidium dimidiatum* in Basrah, Southern Iraq

Abdullah H.Al-Saadoon, Mohanad K.M. Ameen, Muhammed A.Hameed* ,Adnan I. Al-Badran

Department of Biology, College of Science, Basrah university, Iraq

**Date Palm Research Centre, Basrah university, Iraq*

ABSTRACT

In Basrah , grapevines suffer from dieback .*Lasiodiplodia theobromae* and *Neoscytalidium dimidiatum* were isolated from diseased grapevines *Vitis vinifera* L. and identified based on morphological characteristics and DNA sequence data of the rDNA internal transcribed spacer (ITS) region . The results of the pathogenicity test conducted under greenhouse conditions for *L. theobromae* and *N. dimidiatum* revealed that both species were the causal agents of grapevines diebacks in Basrah, Southern Iraq. A brief description is provided for the isolated species .

E-Mail :Mohanadkma@yahoo.com

INTRODUCTION

Grapevine *Vitis vinifera* L. is the most widely planted fruit crop worldwide and is cultivated on all continents except Antarctica (Mullins *et al.*,1992).The area under plantation in Iraq is 240,000 hectares,and generate an annual crop of 350,000 tons grape(FAO,1996).It is an economically important fruit crop globally.In Basrah Province Southern Iraq ,grapevines are mainly cultivated in the Abo-Alkasib area which is located near Shatt Al-Arab river and dominated by date palm plantations.

In a survey of grapevines grown in Basrah,several vineyards were found to suffer from dieback disease that killed the plants. The water salinity of the Shatt Al-Arab at Qarmat Ali was found to be approximately 0.5 p.p.t but in recent years it was noted as being more than 2 p.p.t.Several of the contributing factors for the

increase in salinity are likely to have been the great reduction in levels, continuous flushing of salts from irrigated land via drainage canals into the river and the linkage of the of the southern part of Haur Al-Hammar(at Qarmat Ali) to a new canal, the “Al-Basrah Canal”,which run parallel to Shatt Al-Arab river into the Arabian Gulf(Bedair,2006).Many environmental stress factors weaken plant hosts and make them more susceptible to infection by fungi. Out of these factors is the salinity which may contribute to reduce plant growth through the effect on physiological functions such as photosynthesis respiration and absorption(Bernstein and Hayward, 1958;Leonova and Shevyalova,1970;Alsaidi,2000),and increase the vulnerability to organism.

Reckhaus(1987)considered that stress factors enhanced the severe

rity of dieback disease caused by Botryosphaeriaceae species.

Species of the Botryosphaeriaceae are economically important opportunistic pathogens, as well as being saprophytes on decaying plant materials, whereas others are entirely endophytic (Barr,1987;Smith *et al.*1996 ; Denman *et al.* ,2000).Many of these fungi cause canker and dieback diseases on numerous plant hosts throughout the world(von Arx,1987 ;Burgess *et al.*,2006; Slippers and Wingfield, 2007). The taxonomy and identification of Botryosphaeriaceae is mostly based on anamorphic descriptions , because the teleomorphs are observed rarely in nature and seldom produced in culture (Jacobs and Rehner,1998;Denman *et al.*2000; Zhou and Stanosz, 2001; Phillips,2002;Crous *et al.*,2006; Schoch *et al.*,2006).In the recent studies on the basis of 18s rDNA sequence data and multi-gene approach,16 genera were related

to Botryosphaeriaceae(Crous *et al.*,2006;Damm *et al.*,2007; Phillips *et al.*2008).The anamorphic states of this group, including *Diplodia*,*Lasiodiplodia*, *Neofusicoccum* and *Neoscytalidium* have been reported from infected grapevines as a causal agents of cankers,dieback,bud mortality and bunch rot(Phillips, 2002; van Niekerk *et al.*,2004; Luque *et al.*,2005;Taylor *et al.*,2005; Úrbez Torres *et al.*,2006a, 2008). Species in a Botryosphaeriaceae have been reported to cause various dieback symptoms in grapevines. These symptoms include wood streaking, shoot dieback, bud necrosis, cane bleaching and graft failure(Lohoczky,1974; Larignon *et al.*2001; Phillips, 2002 ; Taylor *et al.*2005,Úrbez-Torres *et al.*,2008b, 2008).The symptoms are characterized by the slow development and their severity increased with age of the grapevines that are 8 or more year old or that are subjected to stress(Boyer,1995; Larignon and

Dubos,2001).Some of the symptoms, especially brown wood streaking, are resemble those found in trunks and arms affected by Petri disease and esca complex caused by *Phoeomoniella chlamydospora* (Mugnai et al.,1999; Phillips ,2002).Various species in this family can be isolated from grapevine are only weakly pathogenic or entirely non-pathogenic (Phillips,2002).

Lasiodiplodia theobromae (Pat.) Griffon and Maubl.,is a common plant pathogen in the tropical and subtropical areas of the world.It is associated with various diseases including cankers , dieback and root rot on a wide range of hosts (Punithalingam, 1980).Vascular cankers and grapevine dieback caused by *Lasiodiplodia theobromae* first were reported in Egypt in 1972(El-Goorani and El-Meleigi, 1972) .After fifteen years, a field study carried out in California showed *L.theobromae* to be an important grapevine pathogen

(Laevitt and Munnecke,1987). Recent studies showed that the fungus has been a significant pathogen associated with declining of grapevine in south Africa and Australia(van Neikerk et al. ,2004;Taylor et al.,2005 ;wood and wood,2005). A study conducted in vineyards of Sonora and Baja California revealed that perennial cankers and consequent grapevine dieback caused by *L.theobromae* and *Diplodia seriata* were a major problem in the most important grape-production areas of Mexico(Úrbez-Torres ,2008).Canker of grapevine caused by a Botryosphaeriaceae species first was reported in Sicily ,and the first reported of infections caused by *L.theobromae* on grapevine in Italy (Burruano et al.,2008).

Neoscytalidium was introduced by Crous and Slippers as a new genus in the Botryosphaeriaceae and the type species designated is *Neoscytalidium dimidiatum* (Penz.) Crous and Slippers,comb.nov.

(Crous *et al.*,2006). *Neoscytalidium dimidiatum* has been reported on diverse woody plants, frequently as *Hendersonula toruloides* (Punithalingam and Waterston ,1970 ;Sutton and Dyko, 1989; Farr *et al.*,2004). Although reported to be cosmopolitan ,the disease caused by this fungus tend to occur in tropical countries as well as California (Farr *et al.*,2005).Symptoms include gummosis and dieback of stone fruit trees in Egypt (Natrass, 1933), branch wilt, decline and death on citrus in Iran (Alizadeh *et al.* 2000),leaf spot diseases in India (Chandra,1974) and a canker and a dieback of *Eucalyptus* in Arizona (Matheron and Sigler,1993).So far little attention has been given to mycotic grapevine diseases in Iraq. Early research by Natour and Ahmed (1969) reported that *Hendersonula toruloides* caused branch wilt of grapevines, in the central region of Iraq.Recently Saido (2007) isolated some fungi

associated with grapevine decline in Duhok Province, Northern Iraq, includes particularly *Botryosphaeria* spp., *Phaeoacermorium aleophilum* and *Cylindrocarpum destructans*.these represented new records for Iraq .Therefore,this is the first report on fungi grapevine diseases in Basrah region, Southern Iraq.

2.MATERIALS AND METHODS

Symptomatic grapevine parts (arms, canes and leaves)were collected from several vineyards in Abo-alkasib area,Basrah Province, Southern Iraq. Small pieces of infected tissue, taken from the margin between necrotic and apparently healthy tissue, were surface sterilized with 5% sodium hypochlorite for 5 min.and ,rinsed three times with sterile distilled water. The surface-sterilized pieces were placed in Petri dishes lined with sterilized,

moist filter paper and 10 pieces were placed in Petri plates containing potato dextrose agar (PDA)(Himedia Laboratories Pvt.Ltd. -india) supplemented with chloramphenicol (50 µg/ml)to prevent bacterial growth. All plates were incubated at 25 °C until fungal propagules were observed. Pure cultures of each isolate were obtained by excising a hyphal tip on to plates of potato dextrose agar. In order to enhance sporulation ,cultures were placed on 2% water agar bearing pieces of autoclaved grapevine canes and inoculated at 25 °C. Isolates were examined weekly for the formation of pycnidia and conidia. Isolated fungi were identified based on the morphological characters in culture and on natural substrates.

2.1 Molecular phylogenetic characterization

2.1.1 DNA isolation

Total genomic DNA was isolated from fresh mycelium according to a miniprep protocol described by Cenis (1992).Pure cultures of each isolate were inoculated onto 500 µl of liquid potato dextrose medium (Difco Laboratories Ltd.,Surrey,United Kingdom) and incubated at 25°C for 72h.The mycelial mat was pelleted by centrifugation at 13,000rpm for 5min and was washed with 500µl of Tris-EDTA,then homogenized by hand in 300 µl of extraction buffer (200 mM Tris-HCl [pH 8.5],250mM NaCl,25mM EDTA, and 0.5%sodium dodecyl sulfate) for 5 min. 150 µl of 3 M sodium acetate (pH 5.2) was added, and the mixture was cooled to 20°C for 10 min. Fungal debris was pelleted by centrifugation at 13,000rpm for 5min, the supernatant transferred to a fresh tube, and an equal volume of isopropanol was added. DNA was then pelleted by centrifugation at 13,000rpm for 10min and washed

with 70% ethanol, then air dried and resuspended in 100 μ l TE (10 mM Tris-HCl [pH 8.0], 1mM EDTA).10mg/ml of RNase was added at 37°C for 45min.to digest the RNA. The DNA quantified using Eppendorf® BioPhotometer and was stored at -20°C.

2.1.2 PCR amplification of ribosomal DNA regions

The universal primers ITS1-F (5'CTTGGTCATTTAGAGGAA GTAA-3') and ITS4 (5'-TCCTCCGCTTATTGATATGC -3') were used to amplify the ITS/5.8S coding rDNA gene regions as described by White *et al.* (1990).Each PCR reaction mixture contained 5ng of genomic DNA, 1 μ M of each primer, PCR reaction buffer (50mM KCl,50mM Tris-HCl;[pH 8.3] 0.1mg/ml bovine serum albumen), 3 mM MgCl₂, 200 μ M of each dNTP, 2.5 U of Taq DNA polymerase (Promega) and auto-

claved d₂H₂O to make-up the total volume of 50 μ l. The PCR protocol consisted of an initial denaturation step at 95°C for 2 min, followed by 30 cycles of 94°C for 1 min, 54°C for 30 s, and 72°C for 1 min and a final extension at 72 °C for 10 min. The PCR products were separated on a 1.2% agarose gel, stained with ethidium bromide and viewed with ultraviolet light. PCR amplified fragments were purified using QIAquick PCR (Qiagen, Amersham, Piscataway, NJ, USA) columns following the manufacturer's instructions and negative control (PCR reagent mixture) was included in the amplification.

2.1.3 DNA sequencing

PCR products were purified using the Promega gel and PCR clean-up system . The instructions of the QIAquick Gel extraction kit(QIAGEN) were followed and directly cycle sequenced in

both directions using the BigDye Ready Reaction Kit (PE Applied Biosystems, Foster City, California) on an ABI Prism automated DNA sequencer (model 377, version 2.1.1; Applied Biosystems Warrington, United Kingdom) with the same primers.

2.1.4 Phylogenetic analysis

The sequence results from all samples when compared to DNA database demonstrated that they were derived from the fungal ITS regions. To identify the species, a sequence similarity search was performed using BLAST (Basic Local Alignment Search Tool) at NCBI website (<http://blast.ncbi.nlm.nih.gov/Blast.cgi>). The most similar 100 sequences were downloaded from NCBI and aligned using ClustalX2. The phylogenetic tree was viewed using MEGA 5.0.

2.2 Pathogenicity test

Pathogenicity tests were made on 2 years old grapevine plants of

the Abbassi cultivar. In each experiment, apparently healthy looking plants were selected and specimens were taken from their arm, cane and leaves to confirm the absence of the test pathogens. Plants found infected with the test pathogen(s) were not used in the study. A cut in the arm, cane and leaf was made using a sterile sharp blade and inoculated by spraying either 40 ml of conidial suspension (5×10^6 conidia ml⁻¹)(as above) or sterile water (controls) using an atomizer. The conidia quantified microscopically using a Neuburger chamber and adjusted to 10^6 conidia/ml with d₂H₂O containing 0.02% Tween 20. Plants were monitored for one week to observe the development of disease symptoms. To satisfy Koch's postulates, small pieces of necrotic tissue were cut from the edge of each lesion, surface sterilized for 5 min. with 5% sodium hypochlorite, washed three times with sterile distilled water and placed on

PDA Petri plates, then incubated at 25 °C. After 4 days of inoculation, small pieces/tissues were examined for lesions/ disease symptoms.

3.RESULTS AND DISCUSSION

3.1 Morphology

Two organism were consistently isolated from plant parts showing dieback symptoms. Based on the morphological characters, isolates from the Basrah Region of Southern Iraq were identified as *L. theobromae* and *N. dimidiatum*. The identification of the isolates was performed using the relevant publications ,Ellis(1971) ,Punithalingam (1976,1980), Sutton and Dyko (1989), Crous *et al.*(2006) and Alves *et al.*(2008). Colonies of *Lasiodiplodia theobromae* white ,becomign dark olivaecious with dense aerial mycelium (Fig.1,A). Pycnidia were dark brown to black formed on grapevine canes

after 20 days in culture (Fig.1,B). Conidiogenous cells hyaline with cyliderical hyaline and aseptate paraphyses(Fig.1,D).Conidia were initially hyaline becoming dark brown with one septa when mature and longitudinal striations ,17-23x10-12µm(Figs.1,C,D) .This is first record of this fungus as a pathogen of grapevines in Iraq. The climatic conditions of Basrah city is mostly humid with high temperatures. These conditions might be favorable for infection by this pathogen. This result is agreed with other studies (Punithalingam,1980;Leavitt,1987; Hewitt, 1988;Úrbez-Torres, 2006a, 2008; Burruano *et al.*, 2008). This fungus has been isolated from grapevine showing decline and dieback symptoms in Egypt (El-Goorani and El-Mel-eigi,1992), Califonai (Leavitt ,1987), Arezona, Mexico (Leavitt, 1990), Portugal (Phillips,1998, 2002), Australia(Castillo -Pando *et al.*,2001;Taylor *et al.*,2005), south Africa (van Niekerk *et*

al.,2004), Spain(Úrbez-Torres, 2006b; Aroca *et al.*,2008;Martin *et al.*,2009), Argentina (Alves *et al.*,2008) and Bolivia(Kaiser *et al.*,2009). It was also reported on other hosts in adjacent countries

,including mango in Oman and Pakistan (Adawi *et al.*,2003 ;Khanzada *et al.*,2004), apricot and peaches in China(Li *et al.*, 1995).



Fig.1. *Lasiodiplodia theobromae*. A. Growth on potato dextrose agar(PDA)after 10 days. B. Longitudinal section of infected shoot of grapevine showing pycnidium with 2-celled dark pycnidiospores C. Conidia mature dark brown with one septum D . Paraphyses cylindrical, aseptate, hyaline. Conidia produced initially hyaline and aseptate, subovoid to ellipsoid-ovoid bar= 10µm.

The hyphae of *Neoscytalidium dimidiatum* mid to dark brown, pycnidia were dark brown to black formed on infected grapevine canes. Chains of arthroconidia were developed from unidentified, brown hyphae, conidia were cylindrical, brown, 0-2 septate at maturity, 4-6x7-12 μ m (Fig.2,B). *N. dimidiatum* has been reported to cause branch wilt of grape in Baghdad, central Iraq (Natour & Ahmed, 1969). This is the first

time to record of this fungus as pathogen of grapevine in Basrah province southern Iraq. *N. dimidiatum* has been reported from *Andansonia perrieri* in Australia (Sakalidis *et al.*, 2011), citrus in Iran and Italy (Alizadeh *et al.*, 2000; Polizzi *et al.*, 2009), almond in California (Inderbitzin *et al.*, 2010) and *Prunus* spp. in Egypt (Farr *et al.*, 2005), mango in Niger (Pandey *et al.*, 1981; Reckhaus and Adamous, 1987).

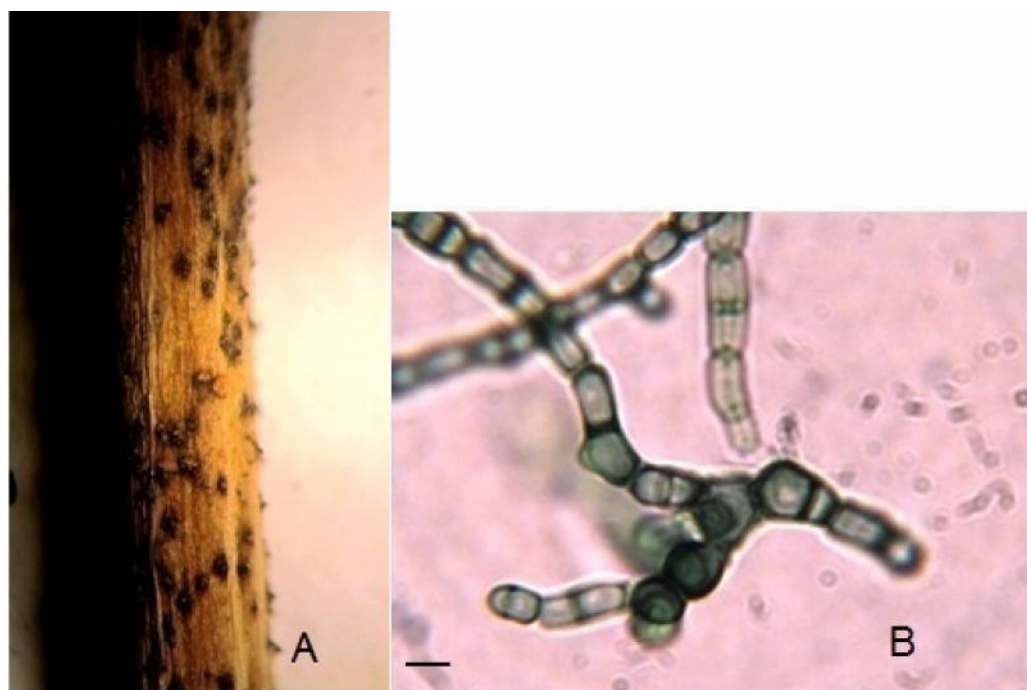


Fig.2. A. *Lasiodiplodia theobromae*. Pycnidia dark brown to black formed on grapevine canes. B. *Neoscytalidium dimidiatum*. Hyphae and chains of arthroconidia. Bar= 4 μ m

3.2 Phylogenetic analyses

The PCR-based method is considered a quicker and more sensitive technique compared to morphological identification, with high discriminative ability between morphologically similar species.

The ITS (the universal transcribed spacer) regions are typically variable and quite informative (Diaz and Fell, 2004). The universal fungal primers (ITS1/ITS4) successfully amplified the genomic DNA for all isolates that we tested.

The sequence results demonstrated that they were derived from the fungal ITS regions when compared to the database of sequences on GenBank. BLAST results showed the most identical sequence was ITS/5.8S rDNA region of *L. theobromae* and *N. dimidiatum* showing 100% identity. The results of sequence similarity indicated that

the isolated strains are *L. theobromae* and *N. dimidiatum*.

3.3 Pathogenicity tests

Grapevine plants that were inoculated with spore suspensions of *L. theobromae* and *N. dimidiatum* developed clear dieback symptoms after approximately 2 weeks (fig.3 A, C, D). No symptoms were observed on uninoculated plants (control) (fig.3,B).

The most obvious symptoms on plants inoculated with *L. theobromae* and *N. dimidiatum* was the presence of dark wood or discoloration observed in the green arms and canes.

During the trial period, there were no obvious symptoms of *L. theobromae* observed on leaves of inoculated plants. This agrees with previous studies conducted in California, Portugal and Mexico, that found that there were no foliar symptoms associated with this pathogen (Phillips, 1998; Urbez-Torres et al. 2006, 2008). The present study showed that *L.*

theobromae was more virulent than *N. dimidiatum*. This result is in agreement with a previous studies conducted in California, south Africa and Mexico in which *L.theobromae* was shown to be one of the most virulent species(Leavitt,1990;van Niekerk *et al.*,2004;Úrbez-Torres,2008). However, in western Australia *L.theobromae* isolates were avirulent or only weakly pathogenic in inoculated Red Globe mature canes(Taylor *et al.*,2005).

L.theobromae and *N.dimidiatum* may create a serious dieback disease to vineyards in Iraq, particularly with the relationship to the environmental conditions. Pycnidia of *L. theobromae* started developing on inoculated canes and trunk about 2 weeks after inoculation (fig.3 A.C.D). Plants inoculated with *N. dimidiatum* began to desiccate and lost their green color from the apex toward the base 7 days after inoculation .

After 4 weeks the entire seedling turned dark brown (fig.3, A, C, D). *Lasiodiplodia theobromae* and *N. dimidiatum* were reisolated from the artificially inoculated plants. Whereas no fungi were reisolated from the control treatments.

It was worth mentioning that accurate identification of botryosephaeriaceae species is necessary to monitor global distribution of these pathogens, contribute to appropriate application of quarantine decisions and develop an effective disease management strategies, because these species differ considerably in their interactions with different hosts and environmental conditions(Britton and Hendrix,1986;Denman *et al.*,2003).

This work represent the first molecular detection and pathogenicity of *L.theobromae* and *N.dimidiatum* on grapevine in this part of the world and is still preliminary which may be useful for a further surveys to correlate

botryosphaeriaceae species with of Iraq.
the different disease in vineyards

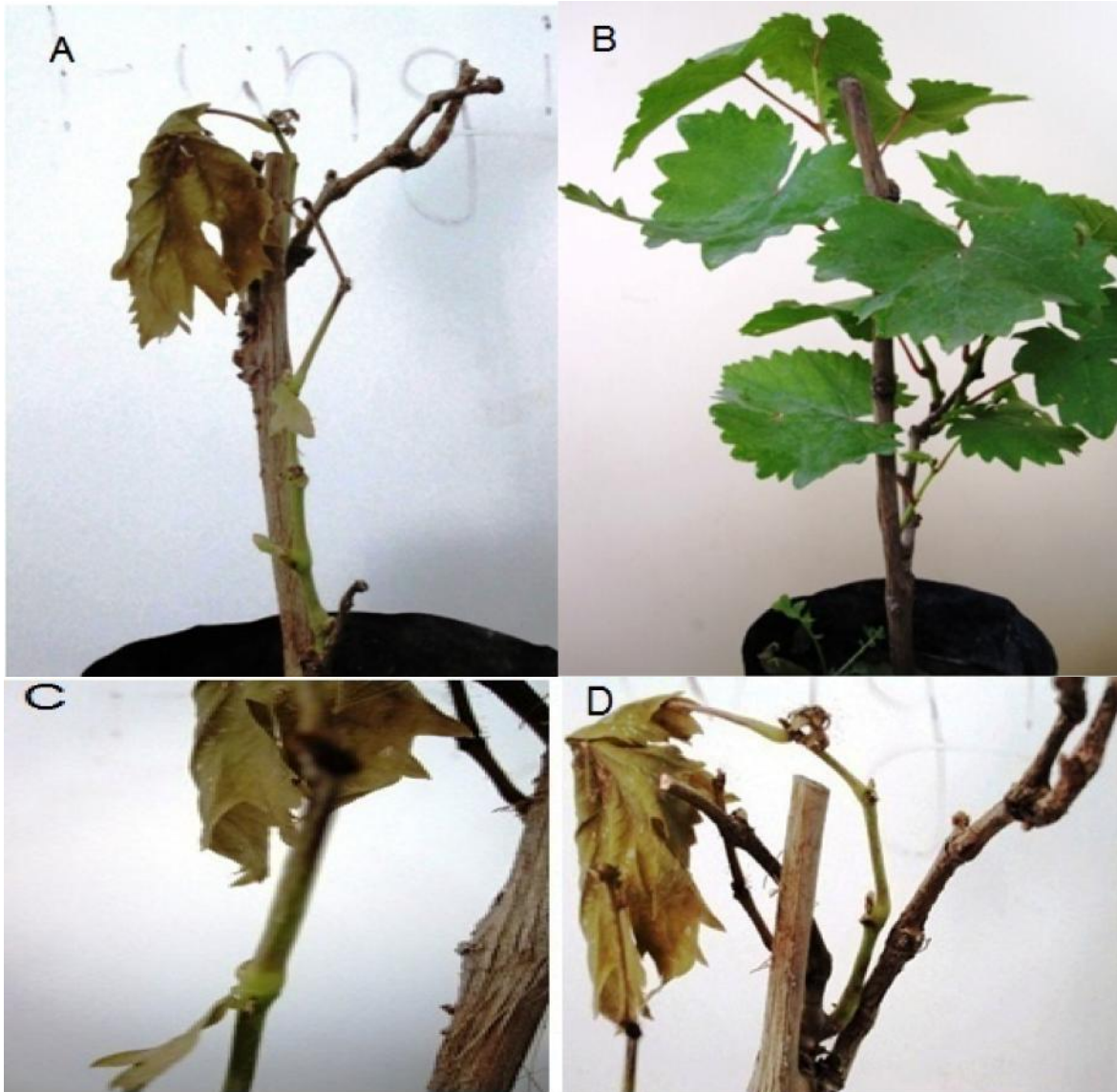


Fig. 3 .Grapevine plant inoculated with spore suspensions of [A.D. *Lasiodiplodia theobromae* C. *Neoscytalidium dimidiatum*] developed clear dieback symptoms approximately 2 weeks after inoculation. Darkened wood or discoloration was observed in the green arms and canes B. Grapevine plant uninoculated with spore suspensions of *L. theobromae* and *N. dimidiatum*

REFERENCES

- Abdollah zadeh J, Javadi A, Mohammadi GE, Zare R and Phillips A J L.** (2010). phylogeny and morphology of four new species of *Lasiodiplodia* from Iran. *Persoonia*, 25:1-10.
- Al-Adawi AO, Deadman ML, Al-Rawahi AK, Kha AJ and Al-Maqbali YM.** (2003) *Diplodia theobromae* associated with sudden decline of mango in Sultanate of Oman. *Pl pathol*, 52:419.
- Alizadeh A, Heidarian A and Farrokhi-Nejad R.** (2000). Citrus branch wilt, decline and death caused by *Nattrassia mangiferae* and its other hosts in Khuzestan Province. Iran. *JPLPathol*, 36:21–24.
- Alsaidi IH.** (2000). Viticulture .Part 1. Mousel. Iraq. pp595
- Alves A, Crous PW, Correia A and Phillips AJL.** (2008). Morphology and molecular data reveal cryptic species in *Lasiodiplodia theobromae*. *Fung Diver*, 28:1–13.
- Aroca A, Raposo R, Gramaje D, Armengol J, Martos S and Luque J.** (2008). First report of *Lasiodiplodia theobromae* associated and decline of grapevine rootstock Mother plants in Spain. *Pl Dis*, 92:832.
- Barr ME.** (1987). Prodrromus to class Loculoascomycetes , Amherst , Massachusees: Published by the author.
- Bedair HM, Al-Saad HT and Salman NA.** (2006). Iraq's southern marshes something special to be conserved; a cause study. *Mar Bul* 2:99-126.
- Bernstein L and Hayward HE.** (1958). Physiology of salt tolerance. *Ann Rev Plant Physiol*, 9:25-46.
- Britton KO and Hendrix FF.** (1986). Population dynamics of *Botryosphaeria* spp. In peach gummosis canckers. *Pl Dis*, 70:134-136.

Burgess, Treena T, Barber, Paul A, Mohali Sari Pegg, Geoff, deBeer and Wilhelm, Wingfield Michael J. (2006). Three new *Lasiodiplodia* spp. From the tropics, recognized based on DNA sequence comparisons and morphology. *Mycologia*, 98:423–435.

Burrano S, Mondello V, Conigliaro G, Alfonzo A, A and Mugnai (2008). Grapevine decline in Italy caused by *Lasiodiplodia theobromae*. *Phytopathol Mediterr*, 47:132-136.

Castillo-Pando M, Somer A, Green CD, Priest M and Seriskanthades M. (2001). Fungi associated with decline of semi-lon grapevines in the Hunter Valley of New South Wales. *Aust Plant Pathol*, 30:59-63.

Chandra S. (1974). Some new leaf-spot diseases from Allahbad (India). *Nova Hedw Beih*, 47:35–102. Crous PW and Palm ME. 1999. Reassessment of the anamorph genera

Botryodiplodia, Dothiorella and Fusicoccum. Sydow, 51:161-175 .

Crous P W, Slippers B, Wingfield MJ, Rheeder J, Marasas WFO, Phillips AJL, Alves

A, Burgess T, Barber P and Groenewald JZ .(2006). Phylogenetic lineages in the Botryosphaeriaceae. *Studies in Mycology* , 55:235–253.

Damm U, Crous PW and Fourie PH. (2007). Botryosphaeriaceae as potential pathogen of *Prunus* in South Africa, with descriptions of *Diplodia africana* and *Lasiodiplodia plurivora* sp. nov. *Mycologia* , 99:664-680.

Denman S, Crous PW, Taulor JE, Kang JC, Pascoe I, and Wingfield MJ (2000). An overview of the taxonomic history of *Botryosphaeria*, and a reevaluation of its anamorphs based on morphology and ITS, DNA phylogeny. *Studies in Mycology*, 45:129-140.

Denman S, Crous PW, Groenewald JZ , Slippers B, Wingfield BD and Winfield MJ. (2003). Circumscription of

Bo-tryosphaeria species associated with Proteaceae based on morphology and DNA sequence data. *Mycologia*, 94:294-307.

Diaz MR and Fell JW. (2004). High-throughput detection of pathogenic yeast of the genus *Tricosporon*. *J Clin Micro*, 42 (8):3696-3706.

El-Goorani MA and EL-Meleigi MA.(1972). Dieback of Grapevine by *Botryodiplodia Theobromae* Pat. In Egypt. *Phyto Medi*, 11:210-211 .

Ellis MB.(1971) .Dematiaceous Hyphomycetes. Commonwealth Mycological Institute, Kew, Surrey, England. 608 p .

Farr DF, Elliott M, Rossman AY and Edmonds RL.(2005). *Fusicoccum arbuti* sp nov .causing cankers on Pacific madrone in western North America with notes on *Fusicoccum dimidiatum*, the correct name for *Scytalidium dimidiatum* and *Nattrassia mangiferae*. *Mycologia*, 97:730-741 .

Farr DF, Rossman AY, Palm ME, Mc Cray EB(n.d).. Fungal databases, Systematic Botany and Mycology Laboratory. ARS USDA. Retrieved 12 Nov .2004, from <http://nt.Ars-grin.gov/fungaldatabases>.

Food and Agriculture Organization (FAO). The united nations .1996. Year book production vol. 50, Rome.

Haleem RAJ.(2010). Fungi associated with decline symptoms on grapevines in Duhok Governorate. Ph.D. thesis. College of Agriculture, Duhok University .

Hewitt. WB.(1988). *Diplodia cane dieback; bunchrot* In: Pearson, R.C.

A.C. Goheen(eds,);(2010). Compendium of grape diseases, pp.26-28. St. Paul, Minnesota (U.S.A) Am. Phytopath. Soc . Inderbitzin P, Bostock RM, Trouillas FP and Michailides TJ. A six locus phylogeny reveals high species diversity in Botryosphaeriaceae

from California almond. *Mycologia*, 102:1350-1368.

Jacobs KA and Rehner SA. (1998). Comparison of cultural and morphological characters and ITS sequences in anamorphs of *Botryosphaeria* and related taxa. *Mycologia*, 90:601–610.

Jan M van Niekerk, Crous pw, Fourie PH and Halleen F. (2004). DNA phylogeny Morphology and pathogenicity of *Botryosphaeria* species on grape-vines. *Mycologia*, 96(4):781-798.

Kaiser WJ, Rivero GM and Valverde BE. (2009). First report of *Diplodia* cane dieback of grapevine in Bolivia. *Pl Dis*, 93:320.

Khanzada MA, Lodhi AM and Shahzad S. (2004). Pathogenicity of *Lasiodiplodia theobromae* and *Fusarium solani* on mango. *Pak J Bot*, 36:181-189.

Lakshman P and Jagadeesan R. (2004). Malformation and crack-ing of nuts on coconut Palms (*Cocos nucifera*) due to the interaction of eriophyid mite

Aceria guerreronis and *Botryodiplodia theobromae* in tamil Nadu, India. *J Pl Dis Prot*, 111: 206-207.

Larignon P and Dubos B. (2001). The villainy of black dead arm, wines and vines. **82**:86-89.

Larignon P, Fulchic R, Cere L and Dubos B. (2001) .Observations of black dead arm in French vineyards . *Phytopathol Mediterr*, 40:336-342.

Leavitt GM. (1990). The occurrence, distribution, effects and control of *Botryodiplodia theobromae* on *Vitis vinifera* in California, Africa and northern Mexico. Ph.D. dissertation, university of

California, River side. Leavitt GM and Munnecke DZ. (1987). The occurrence distribution of *Botryodiplodia theobromae* on grapes (*Vitis vinifera* L .) In *California Phytopathol*, 77, 1690 (Abstr.).

Lehoczky J. (1974). Black dead arm disease of grapevine caused

by *Botryosphaeria stevensii* infection. *Acta Phytopathol Hung*,9:319-327.

Leonova TC Shevyalova. 1970. Incorporation of s³⁵ methi-onine in to free saminoacids in plant leaves under salinization of the medium. *Sov plant Ph-ysiol*, 37: 689-693.

Li HY,Cao RB and Mu YT.(1995).In-vitro inhibition of *Botryosphaeria dothidea* and *Lasiodiplodia theobromae* and chemical control of gummosis disease of Japanese apricot and peach tree in Zhejiang province,China. *Crop Prot*, 14:187-191.

Luque J,Martos S and Phillips AJL.(2005).*Botryosphaeria vaticicola* sp.nov. on grapevine:a new species with a *Dothiorella* ana-morph. *Mycologia*, 97:1111-1121. **Martin MT,Martin L,de Francisco MT and Cobos R.** (2009).First report of *Lasiodiplodia theobromae* and *Cryptovalsa ampelina* associated with

grapevine decline from Castilla Yleon,Spain. *Pl Dis* ,93:545.

40-Moller EM,Bahnweg G, Sandermann H and Geiger HH. (1992).A simple and efficient protocol for isolation of high molecular weight DNA from filamentous fungi, fruit bodies, and infected plant tissues. *Nucleic Acids Res* ,20:6115-6.

Mullins MG,Bouquet A and Williams LE.(1992).Biology of the grapevine.press Syndicate of University of Cambridge. Cambridge.239. **Natrass RM.** 1933. A new species of *Hendersonula* (*H.toruloides*)on deciduous trees in Egypt. *Trans Brit Mycol Soc*,18:189 –198.

Natour RM and Ahmed JM.(1969).control of branch wilt disease of grape. *Dis Rep* ,53:152–153.

Pandey RS,Bhargava SN, Shukala DN and Khati DVS. (1981).A new leaf spot disease of mango. *Pl Dis*,65:441-442.

Phillips AJL. (1998). *Botryosphaeria dothidea* and other fungi

associated With Excoriose and dieback of grapevines in Portugal. *J Phytopathol*,146:327–332

Phillips AJL.(2002).*Botryosphaeria* species associated with diseases of grapevines in Portugal. *Phytopathol Mediterr* ,41:3–18.

Phillips A,Alves A,Correia A and Lague J.(2005).Two new species of *Botryosphaeria* with brown,1–septate ascospores and *Dothiorella* anamorphs. *Mycologia* **97**:513–529.

Phillips AJL,Alves A, Pennycook SR, Johnson PR,Ramaley A,Akulov A and Crous PW. (2008). Resolving the phylogenetic and taxonomic status of dark-spored teleomorph genera in the *Botryosphaeriaceae*.*Persoonia* ,21:29-55.

Polizzi G,Ajello D,Vitale A, Giuffrida FF,Groenewald JZ and Crous PE. (2009). First Report of shoot blight,canker and gummosis caused by *Neoscyt-*

alidium dimidiatum on citrus in Italy.*Pl Dis* ,**93**:1215.

Polizzi G,Aiello D,Castello I,Vitale A,Groenewald JZ and Crous PW. (2011). Occurrence, molecular characterisation and pathogenicity of *Neoscytalidium dimidiatum* on citrus in Italy.*Acta Hort*, 892.

Punithalingam E.(1976). *Botryodiplodia theobromae*.CMI descriptions of pathogenic fungi and

bacteria No.519.Kew,Surrey,England:Commonwealth Mycol.Instit.

Punithalingam E.1980. Plant diseases attributed to *Botryodiplodia theobromae*. In: *Biblioteca Mycologica* .J.Cramer.Berlin.

Punithalingam E and Waterston JM.(1970). *Hendersonula toruloidea* C.M.I.*Descript Pathog Fungi Bact* ,274 :1–2.

Reckhaus P.1987. *Hendersonula* dieback of mango in niger.*Plant Dis*,**71**:1045.

Reckhaus P and Adamous I.(1987).*Hendersonula* dieback

- of mango in Niger. *Pl Dis*,71:1045.
- Saido KA.**2007.Fungal decline of grapevines in Duhok province. M.Sc. thesis. College of Agriculture , Duhok University .
- Sakalidis ML,Hardy GES and Burgess TI.**(2011). Endophytes as potential pathogens of baobab species *Adansonia gregorii* :a focus on Botryosphaeriaceae. *Fung Ecol* ,4:1-14.
- Schoch CJ,Shoemaker RA, Seifert KA, Hambleton S, Spatafora J and Crous PW.** (2006).A multigene phylogeny of the Dothideomycetes using four nuclear loci. *Mycologia*, 98:1041-1052.
- Slippers B and Winfield MJ.** (2007). Botryosphaeriaceae as endophytes and latent pathogens of woody plants :diversity, ecology and impact. *Fung Biol Rev*,21:90-106.
- Smith H,Wingfield MJ,Crous PW and Coutinho TA.** (1996). *Sphaeropsis spainea* and *Botryosphaeria dothidea* in *Pinus* spp.in south Africa. *Sou Afri J Bota* ,62:86-88.
- Sutton BC and Dyko BJ.**1989. Revision of *Hendersonula*. *Mycol Res*,93:466– 488 .
- Taylor A,Hardy GES,J,Wood P and Burgess , T.**(2005.) Identification and pathogenicity of *Botryosphaeria* species associated With grapevine decline in western Australia. *Aust Plant Pathol*,34:187-195.
- Úrbez–Torres JR,Leavitt GM, Guerrero JC,Guevara J and Gubler WD.**(2008.) Identification and pathogenicity of *Lasiodiplodia theobromae* and *Diplodia seriata* ,the causal agents of bot canker disease of grapevines in Mexico. *Plant Dis*,92:519–529.
- Úrbez–Torres JR, Leavitt GM, Voegel T and Gubler WD.** (2006).Identification and Distribution of *Botryosphaeria* species associated with grapevines cankers in California. *Plant Dis* ,90:1490–1503.

Úrbez–Torres JR, Pelaez H, Santigo Y, Martin C, Moreno C and Gubler WD.(2006)b .Occurrence of *Botryosphaeria obtuse* ,*B.dothidea* and *B.parva* associated

with grapevine trunk diseases in Castillay León region, Spain .*Plant Dis.*Van Niekerk JanM van,Crous Pedro W ,Groenewald J,Fourie PaulH and Halleen

Francois.(2004).DNA phylogeny, morphology of *Botryosphaeria* species on grapevines . *Mycologia*,**96**:781–798.

Von Arx JA.1987.Plant pathogenic fungi .Berlin ,Germany:J .Carmer. 288 p .

Wood PM and Wood CE.(2005).Cane dieback of Dawn seedlessTable grapevines (*Vitis vinifera*) in western Australia caused by *Botryosphaeria rhodina* .*Aust Plant Pathol*, 34:393–395.

Zhou S and Stanosez GR .(2001).Primers for amplification of mt SSU,DNA ,and a phylogenetic study of *Botryosphaeria* and associated anamorphic fungi, *MycolRese*,105:1033–1044.

اول تسجيل للفطرين *Neoscytalidium* و *Lasiodiplodia theobromae*
dimidiatum كمسببين لمرض الموت الرجعي على العنب في محافظة البصرة جنوب العراق

عبد الله حمود عبد الله السعدون، مهند خلف محمد امين، محمد عبد الرزاق حميد*، عدنان

عيسى البدران

قسم علوم الحياة، كلية العلوم، جامعة البصرة

*مركز ابحاث النخيل، جامعة البصرة

الخلاصة

تعاني بعض نباتات العنب *Vitis vinifera* L. في محافظة البصرة بجنوب العراق من مرض الموت الرجعي، في هذه الدراسة تم عزل الفطرين *Lasiodiplodia theobromae* و *Neoscytalidium dimidiatum* من نباتات عنب ظهرت عليها اعراض مرض الموت الرجعي، صنفت الفطرين مظهريا و جينيا و بينت نتائج اختبار الامراضية ان الفطران سببا للموت الرجعي لنفس النبات عند التلقيح بهما، يعد تسجيل الفطر *L.theobromae* اول تسجيل له في العراق كمرض لنبات العنب بينما يعد تسجيل الفطر الثاني *N.dimidiatum* التسجيل الاول في البصرة كمرض لنبات العنب.