

Description of a new species of Ethmiidae (Lepidoptera)

by

A. DIAKONOFF¹ and K. SATTLER²*Ethmia dentata* spec. nova

♂, ♀. 22—28. Head exactly as in *E. praeclara* Meyrick. Fore wing light grey with 15 to 17 distinct black dots and a row of marginal dots from costa to termen. Hind wing bright orange, apex dark brown. Abdomen orange-yellow, tergites 5, 6, and 7 with a small round dot. Sternites 2 to 7 with a pair of larger round dots on each.

Externally indistinguishable from *E. duplicata* Meyrick. *E. praeclara* Meyrick and *E. colonella* Walsingham are also very similar, but can easily be discriminated by their complete series of abdominal black dots on tergites 1 to 7. *E. argopa* Meyrick is usually larger, abdomen with black dots on tergites 3 to 7.

Male genitalia. Uncus furcate. Posterior part of gnathos shield-like with strong teeth along caudal margin, anterior part broad with irregular smaller teeth

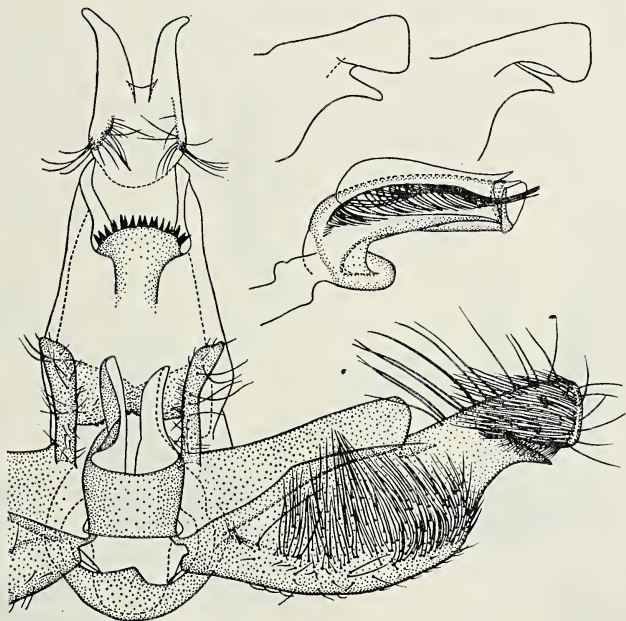


Fig. 1. *Ethmia dentata* spec. nov., ♂, paratype, genitalia no. BM 7482, Japan, Kyusyu, Amami Islands, with right centre, aedeagus; right above, contour of the distal portion of the valva: left, slide no. BM 7485 (Formosa), right slide no. BM 7482, (Japan), for comparison. (K. SATTLER delin.).

¹ Rijksmuseum van Natuurlijke Historie, Leiden, Netherlands.

² British Museum (Natural History), London, England.

(in figure partially hidden behind anellus and labides). Anellus tubular, dorsally open, posterior margin extended, forming a pair of longitudinally folded arms. Labis, a long hairy process with almost parallel sides. Costal joint of valva $1/3$ from apex. Cucullus broader in apical portion, truncate. Apex of sacculus immediately below cucullus more or less pointed, variable in shape. Male genitalia of *E. duplicata* (CLARKE, 1965, pl. 211 fig. 2a *E. bilarella*) distinguished by much longer tips of uncus, long extended posterior part of gnathos, terminally broader labis, and broader rounded distal portion of sacculus.

Female genitalia. As in *duplicata*. 8th segment strongly conical. On each side of the ostium bursae a large rounded pocket-like fold, dentate on the inside, densely filled with scales which get lost during dissection. Antrum almost spherical, a narrow ring of heavy teeth around its posterior margin. Anterior half densely toothed. Teeth extending a short distance into posterior part of ductus bursae. Bursa copulatrix large, with appendix. Signum a deep fold inside an irregular base.

Holotype ♂: Takow, Formosa, 17 October, 1905, (A. E. WILEMAN). British Museum (Nat. Hist.).

Allotype ♀: Phillippine Islands, Luzon, Benguet Province, Klondijke, 800 feet, 15.III.1912 (A. E. WILEMAN). Rothschild Bequest, British Museum (Nat. Hist.).

Paratypes: 20 ♂, 16 ♀: Takow, Formosa, with dates between 21 April and 4

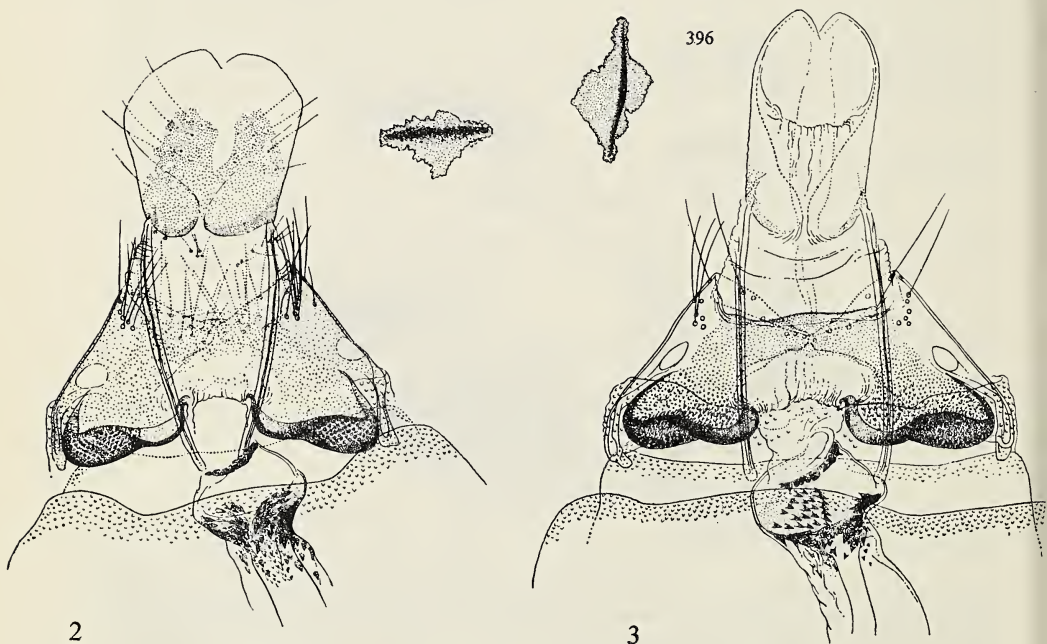


Fig. 2 *Ethmia dentata* spec. nov., ♀, allotype, Luzon, genitalia no. 5549, with above, right signum. Fig. 3, the same species, ♀, Zamboanga, paratype, genitalia no. 5324, with above, left signum. (A. C. M. VAN DIJK delin.).

November, 1904, 1905, and 1906 (A. E. WILEMAN).

2 ♂, 1 ♀ : Formosa.

1 ♀ : Japan, Toshima, Tobetsu, July 1903 (A. E. WILEMAN).

2 ♂ : Japan, Kyusyu, Amami Islands, Okinoerabu Is., Wadamari, 20.V.1960 em. (T. KODAMA), Bred f. *Ehretia?* sp.

1 ♀, Mindanao, Zamboanga del Sur, Zamboanga, 30.VI.1958 (H. E. MILLIRON). Bernice P. Bishop Museum, Honolulu.

This species has been recorded from Japan under the name of *E. duplicata* (MORIUTI, 1963: 36). CLARKE, 1965: 426, erroneously synonymized *E. duplicata* Meyrick with *E. bilarella* Walker.

Literature

CLARKE, J. F. G., 1965, Catalogue of the Type Specimens of Microlepidoptera in the British Museum (Natural History) described by Edward Meyrick 5 : 426, pl. 211 fig. 2—2a.

MORIUTI, S., 1963, Ethmiidae from the Amami-Gunto Islands, Southern Frontier of Japan, collected by Mr. T. Kodama in 1960. *Tyo To Ga* 14 : 36, fig. 2, 8—10, 13—14.

Xylomania patalis Grote in Nederland gevangen (Lep., Noctuidae)

door

B. J. LEMPKE

In 1964 liet de heer KUCHLEIN mij een uil zien, die in Arnhem tegen een winkelraam gevonden was door de heer Sj. VAN DER MOLEN en die met geen enkele uit ons land bekende soort te identificeren was. De voorvleugels waren licht bruin-grijs. In zwart staken hier tegen af de (gedeeltelijke) omtrekken van de drie bekende vlekken, een wortelstreep en een rij pijlvlekken, die naar de apex toe



Xylomania patalis Grote. Genitaal-apparaat van het ♂ en vleugeltekening. Lengte voorvleugel 12 mm. Prep. LEMPKE nr. 901.