



THANK YOU!



Friends,

It's hard to believe another year has past isn't it? We are all so busy with family, friends, work, and (hopefully) some play, it's helpful to pause and reflect every once in a while and acknowledge the progress we have all made in different areas of our lives.

ITI, and those in the very loosely defined "ITI Family," are no different. The past few years have been a whirlwind, but it can be said with confidence that ITI as a whole continues to live its "why" statement – *We exist to learn and serve, every day* – through it all.

Zack Parnell
President/CEO

The following is a checklist of sorts that simultaneously reflects on the growth we have made, and keeps us aligned with where we want to go...

- ✓ **10+ Training Centers** in North America
- ✓ **Over 1,500 hours of online**, on-demand course curriculum
- ✓ **VR Crane Simulators** featuring 7 distinct crane types
- ✓ **OperatorPRO** - the only mobile application for professional crane & equipment operators
- ✓ **VR Hazard Awareness** industrial training & assessments
- ✓ The very best **Technical Team** of high level industry veterans working as ITI instructors and advisors
- x **Zero** crane, rigging, load handling accidents/incidents on planet earth

We are very proud of ITI's progress, but as you can see there is still quite a bit of work left to do! Thank you for joining us on this journey of life and learning, where we all can strive together for a safer tomorrow.

Sincerely,
Zack & Joe



Joseph Kuzar
Technical Director

Get out those smart phone or tablet cameras and go interactive with exclusive videos, technical info, and quick links to course schedules and enrollments.... all here to help **quickly guide you** to the information you want.

If you are viewing your copy of this catalog digitally, no worries, just click or tap any QR code and it will bring you to your proper destination.

We've included directions on accessing QR Codes from your smartphone or device just to the right.....**READY TO GO? LET'S DO THIS!**

Scan QR code to view
the **WHY OF ITI** video.



iPhone Users: Simply open up your camera app and focus on the QR code.

Android Users: Use Google Lens or Google Assistant. You can also configure your camera and the Google App to recognize QR codes by following these steps:

1. Open the Google App
2. Tap the Navigation Menu (three stripes in the upper left corner)
3. Choose: "Settings"
4. Choose: "Screen Search"
5. Swipe to activate
6. Now go back to your camera and you're good to go!

TABLE OF CONTENTS

Thank You from our President and Technical Director ...2

Table of Contents3

ASME & LEEA4

ITI Training Solutions.....5

ITI Training Centers6

ITI Technical Team.....8

ITI Industry Leaders10

ITI Registration Info.....11

OperatorPRO.....12

Rigging Skills Course Progression13

RIGGING..... 14

ITI Rigging Gear Inspector Level I & II.....14

ITI Rigging Gear Inspector Level III.....14

ITI Basic Rigging & Inspection.....16

ITI Intermediate Rigging.....16

ITI Master Rigger.....18

ITI Qualified Signalperson Exams18

ITI Qualified Rigger Exams18

ITI Bull Rigging w/Chain Hoists20

NCCCO Certified Rigger Level I & II Prep Course22

NCCCO Certified Rigger Level I Exams.....22

NCCCO Certified Rigger Level II Exams.....22

NCCCO Certified Signalperson Test Prep & Exams23

CRANES..... 24

NCCCO Certified Mobile Crane Operator Certification.....24

NCCCO Certified Overhead Crane Operator Certification.....26

NCCCO Certified Tower Crane Operator Certification.....26

ITI Mobile Crane Operator - Qualified28

ITI Mobile Crane Operator - Initial28

ITI Boom Truck Operator30

ITI Carrydeck Operator30

ITI Articulating Boom Crane Operator32

ITI Mobile Crane Inspector - Qualified34

ITI Overhead Crane Operator36

ITI Overhead Crane Inspector36

ITI Pedestal Crane Operator38

ITI Pedestal Crane Inspector38

ITI Tower Crane Safety & Inspection40

ITI Tower Crane Technician.....40

ITI Tower Crane Management40

LIFT PLANNING & MANAGEMENT 42

ITI Crane & Rigging Management Bootcamp.....42

ITI Lift Planning Bootcamp.....42

ITI Lift Director & Critical Lift Planning.....44

ITI Accident Investigation for Cranes, Rigging, and Material Handling Operations46

ITI Crane Assembly/Dissassembly Director (Mobile)48

ITI Project Execution for Lift Planners & Rigging Engineers50

EQUIPMENT..... 52

ITI Forklift & Telescopic Handler Operator52

ITI Forklift Inspector.....52

ITI Skid Steer Operator.....52

ITI Aerial Work Platform Operator.....52

ITI Aerial Work Platform Inspector52

ITI Qualified Fabricator53

ITI VIRTUAL REALITY SIMULATIONS..... 62

ITI Bookstore 66



**INDUSTRIAL TRAINING
INTERNATIONAL**
CRANES | RIGGING | LIFT PLANNING | ENGINEERING



Mission Statement

To serve diverse global communities by advancing, disseminating and applying engineering knowledge for improving the quality of life; and communicating the excitement of engineering.

In 2015, ITI's Fundamentals of Rigging Engineering received approval from the American Society of Mechanical Engineers (ASME). Their mission is to promote the art, science and practice of multidisciplinary engineering and allied sciences around the globe. Upon completion of individual courses and the full program, students will receive the ASME logo on their Certificates of Completion, a free one year membership to ASME, continuing education units (CEUs) from the International Association for Continuing Education and Training (IACET) and a coupon valid for one additional ASME training course.

Scan QR code to learn  more about ASME.



Lifting Equipment Engineers Association

The Lifting Equipment Engineers Association (LEEA) is established across the globe as the leading representative body for all those involved in the lifting industry worldwide.

In 2012, ITI underwent a series of audits and evaluations to become an Accredited User Training Company according to the Lifting Equipment Engineers Association. ITI was the first, and currently the only professional training company in North America to be accredited by LEEA.

The process entailed:

1. A corporate audit of ITI as an organization.
2. A complete audit of all ITI course curriculum and ITI examination processes.
3. Individual presentation skill audits of ITI Instructors.
4. Facility audit to determine compliance of ITI Training Centers.

Scan QR code to learn  more about LEEA.



TRAINING SOLUTIONS

At ITI we exist to serve and learn every day. That simple message drives **ALL** of our training solutions. We strive to have a solution for any and all of your training needs; whether it be attending a course at one of our state-of-the-art training centers, or implementing ITI VR to help raise a new generation of crane operators, we want to find the solution that fits best for you.

Cranes	Rigging	Lift Planning & Management	Rigging Engineering	Equipment	HSE/Safety	Maintenance	Fall Protection
							
 Mobile Crane Operator	 Rigging Gear Inspector I, II, III	 Lift Director & Critical Lift Planning	 Engineering Principles for Rigging & Load Handling	 Aerial Work Platform Operator	 General Health & Safety	 Core Competencies - Fundamentals	 Authorized Person
 Mobile Crane Inspector	 Basic Rigging & Inspection	 Assembly/Disassembly Director	 Crane & Derrick Engineering Installation, & Planning	 Aerial Work Platform Inspector	 Regulatory Compliance	 Electrical Systems	 Equipment Inspector
 Overhead Crane Operator	 Intermediate Rigging	 Accident Investigation	 Rigging & Load Handling Equipment Engineering & Applications	 Forklift/Telehandler Operator	 HAZWOPER	 Mechanical Systems	 Confined Space Entry Supervisor
 Overhead Crane Inspector	 Master Rigger	 Project Execution for Lift Planners & Rigging Engineers	 Alternative Load Handling Equipment Engineering & Applications	 Forklift Inspector	 Laboratory Safety	 KWIK REF Series	 Confined Space Entry Rescuer
 Pedestal Crane Operator	 Bull Rigging	 Specialized Transport & Heavy Lift Master Class	 Lift Planning Procedure Considerations & Execution	 Skidsteer Operator	 Air Conditioning/Refrigeration	 Confined Space Trainer	 Competent Person
 Tower Crane Operator	 ITI Qualified Signalperson	 Human Performance Improvement	 Specialized Transport Planning & Engineering Considerations	 Front End Loader Operator	 Building/Grounds Maintenance	 Competent Person Trainer	 Competent Tower Rescuer
 Boom Truck Operator	 NCCCO Rigger I & II	 Crane & Rigging Management Bootcamp	 Standards & Regulations for Load Handling Equipment	 Backhoe Operator	 Electronics	 Energy Conservation	 Competent Person Trainer
 NCCCO Mobile Crane Operator	 NCCCO Signalperson	 Lift Planning Bootcamp	 Project Execution for Lift Planners & Rigging Engineers	 Dozer Operator	 Energy Conservation	 Competent Tower Rescuer	 Competent Tower Rescuer
 NCCCO Tower Crane Operator	 Basic Entertainment Rigging & Inspection	 NCCCO Lift Director					

 Training Centers	 Virtual Reality
 Client Site Training	 Bookstore
 Online	 Field Services
 OperatorPRO	

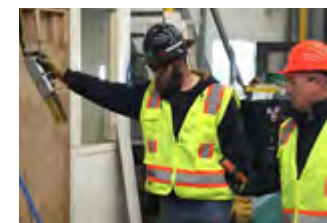
Scan QR code to view



ITI Training Solutions online!

ITI TRAINING CENTERS

NORTH AMERICA



Anchorage, AK

iti.com/anchorage

5811 Old Seward Highway
Anchorage, AK 99518



ITI has partnered with Alaska Rubber & Supply to house a Regional Training Center at their 44,000 square foot Anchorage location. The ITI Anchorage Training Center hosts a variety of open enrollment rigging and inspection training courses.



Chicago, IL

iti.com/chicago

9925 Industrial Drive
Bridgeview, IL 60455



ITI has partnered with Lifting Gear Hire to bring world-class, hands-on rigging training to Chicago. Located at Lifting Gear Hire's National Headquarters, the ITI Chicago Training Center hosts open enrollment courses.



Cleveland, OH

iti.com/chicago

21000 Aerospace Pkwy
Cleveland, OH 44142



ITI has partnered with the Mazzella Companies to house a Training Center at the company's headquarters in Cleveland, Ohio. The Cleveland facility includes:

- Practical training space & equipment
- ITI Rigging Conex
- Full-Sized Classroom
- Break Test Bed



Edmonton, AB

iti.com/edmonton

505 11 Avenue
Nisku, AB T9E 1A8



Energy Safety Canada has partnered with ITI to operate and host open enrollment training courses at their Nisku facility.

ITI has outfitted this training centre with state-of-the-art rigging and lifting equipment and conducts training utilizing a multitude of rigging equipment, overhead lifting systems, over 25 live loads, and a mobile crane.



Houston, TX

iti.com/houston

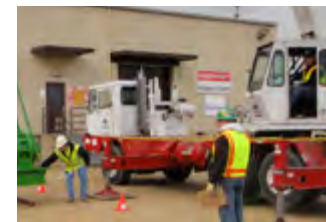
5213 Center St.
Pasadena, TX 77505



ITI has partnered with the Houston Area Safety Council to house our Houston Training Center at the organization's headquarters in Pasadena.

The Houston facility includes:

- CCO Certification
- Indoor & Outdoor - practical training space & equipment
- ITI Rigging Conex
- Virtual Reality (VR) Crane Simulator
- Multiple Classrooms



Memphis, TN

iti.com/memphis

1701 Dunn Avenue
Memphis, TN 38106



Conveniently located, the Memphis, Training Center is within a two-hour drive for over 100 million people. This location is owned by Barnhart Crane & Rigging who had invited ITI to operate and outfit their training center for in-house use. ITI leverages a classroom, a multitude of rigging equipment, overhead crane system, over 35 live-loads, and a mobile crane at this location.



New Orleans, LA

iti.com/neworleans

21000 Aerospace Pkwy
Cleveland, OH 44142



The Houma Training Center location is in the heart of the Gulf's offshore operations. Facility partner Sparrows is headquartered in Aberdeen, UK, and has a vast history and network when it comes to offshore lifting and the other services they offer, including crane manufacturing to the industry worldwide.



Tampa, FL

iti.com/bartow

2651 FL-60
Bartow, FL 33830



Florida Handling Systems (FHS), a Mazzella Company, and ITI have reached an agreement to partner on a new crane, rigging, and load handling training center in Bartow, Florida.



Waipahu, HI

iti.com/hawaii

94-487 Akoki Street, Suite 213
Waipahu, Hawaii 96797



Lawson & Associates, The Building Industry Association (BIA) of Hawaii, and Industrial Training International (ITI) have reached an agreement to partner by offering ITI Courses at BIA's state-of-the-art Construction Training Center (CTC) of the Pacific in Waipahu, Hawaii on the island of Oahu.



Woodland, WA

iti.com/woodland

9428 Old Pacific Hwy
Woodland, WA 98674



Located in the heart of the great US Pacific Northwest, our ITI Corporate HQ and Training Center is renowned by many to be the best crane & rigging training center of its kind in the world utilizing a multitude of rigging equipment, overhead lifting systems, over 25 live-loads, and mobile cranes at this location.

Scan QR code to



take a video tour!

ITI TECHNICAL TEAM

For more than 30 years, ITI has been renowned for providing the highest quality instruction for industry leaders the world over.

In large part, this can be attributed to the experts that make up the ITI Technical Team. With more than 300 combined years of industry experience, ITI Instructors & Consultants have lived what they teach. ITI has delivered its high quality, hands-on training in every U.S. State, eight of ten Canadian Provinces, and on every continent except for Antarctica.



Joseph Kuzar
Technical Director

- **NCCCO Certified** - Lift Director, Mobile Crane Operator, Overhead Crane Operator, Articulating Boom Crane Operator, Signalperson, Rigger I & II
- **NCCCO Certified Practical Examiner** - Signalperson, Rigger I & II, Mobile Crane Operator (TLL, TSS, LBC, LBT) • ASME P30.1 (Planning for load handling activities) - Main Committee Member
- **LEEA** - Accredited Instructor



Paris Bishop
Instructor

- **NCCCO Certified** - Signalperson, Rigger I & II, Overhead Crane Operator
- **LEEA** Accredited Instructor



Jim Cox
Master Instructor/
Chair of Overhead Cranes
& Inspection

- **NCCCO Certified** - Lift Director, Mobile Crane Operator, Overhead Crane Operator, Signalperson, Rigger I & II
- **NCCCO Certified Practical Examiner** - Signalperson, Rigger I & II
- **LEEA** - Accredited Instructor



Jay Dyson
Instructor/Manager
of Facilities and Equipment

- **NCCCO Certified** - Mobile Crane Operator, Overhead Crane Operator, Articulating Boom Crane Operator, Signalperson, Rigger I & II
- **NCCCO Certified Practical Examiner** - Rigger I & II, Mobile Crane Operator (TLL, TSS, LBC, LBT), Articulating Boom Crane Operator, Overhead Crane Operator
- **LEEA** - Accredited Instructor



Judy Chenoweth
Technical Services Manager

- Former Training Center Manager, ITI
- Former Bookstore Manager, ITI
- NCCCO Test Site Coordination



Mark Chudy
Instructor

- **NCCCO Certified** - Signalperson, Rigger I & II, Mobile Crane Operator, Overhead Crane Operator
- **LEEA** - Accredited Instructor



Jasen Doyle
Instructor

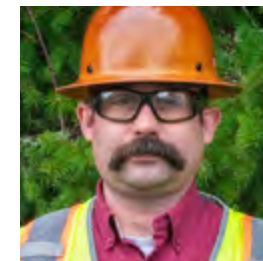
- **NCCCO Certified** - Signalperson, Rigger I & II, Mobile Crane Operator, Overhead Crane Operator
- **NCCCO Certified Practical Examiner** - Mobile Crane Operator (TLL, TSS)
- **LEEA** - Accredited Instructor



Fernando Ferraz
Instructor/Managing
Director - ITI Latin America

- **Associação Brasileira de Normas Técnicas (ABNT)**, member
- **Association of Crane & Rigging Professionals (ACRP)**, member

ITI TECHNICAL TEAM



Mike Goett
Instructor

- **H2S Alive Certified** - Energy Safety Canada (ESC)
- **NAIT** - Journeyman Crane & Hoisting Equipment Operator



Justin Irwin
Instructor

- **NCCCO Certified** - Mobile Crane Operator, Overhead Crane Operator, Signalperson, Rigger I & II
- **LEEA** Accredited Instructor



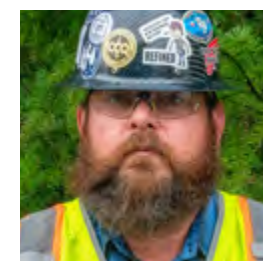
Richard Marcotte
Senior Instructor/
Chair of Rigging

- **NCCCO Certified** - Lift Director, Signalperson, Rigger I & II
- **NCCCO Certified Practical Examiner** - Signalperson, Rigger I & II
- **LEEA** - Accredited Instructor



Alberto Rocha
Instructor - ITI Latin America

- **American Society of Mechanical Engineers (ASME)**, member
- **Associação Brasileira de Normas Técnicas (ABNT)**, member



Justin 'Bloo' Swope
Instructor

- **NCCCO Certified** - Mobile Crane Operator
- **NCCER Certified** - Advanced Rigger, Ironworker



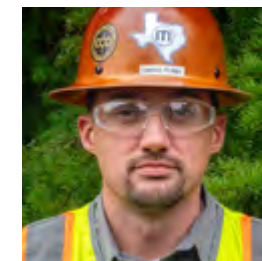
Juan Gutierrez
Instructor

- **NCCCO Certified** - Mobile Crane Operator, Overhead Crane Operator, Signalperson, Rigger I & II
- **NCCCO Certified Practical Examiner** - Mobile Crane Operator (TLL)
- **Houston Business Roundtable (HBR)** - Crane & Rigging Committee Member



Michael Johnson
Senior Instructor

- **NCCCO Certified** - Signalperson, Rigger I & II
- **NCCCO Certified Practical Examiner** - Signalperson, Rigger I & II
- **LEEA** - Accredited Instructor



Dennis Potter
Instructor

- **NCCER Certified** - Rigger
- **PEC Certified** - Safety Core Compliance Officer
- Overhead Crane and Hoist Inspector



Efren Solis
Instructor

- **NCCCO Certified** - Signalperson, Rigger I & II
- **NCCCO Certified Practical Examiner** - Signalperson
- **NCCER Certified** - Construction Site Safety Technician, Construction Site Safety Supervisor
- **LEEA** - Accredited Instructor



Larry Tellier
Instructor

- **LANL** - Hazwopper, Qualified Crane Operator, Qualified Rigger, Forklift Instructor
- **DOE** - Explosives Safety, Pressure Safety

Scan QR code to apply  for an ITI Technical position.

Scan QR code to apply  for an ITI Technical position.

ITI INDUSTRY LEADERS

INDUSTRIAL TRAINING INTERNATIONAL

is proud to have served the following organizations & industries:



- Aerospace
- Construction (AEC)
- Defense Departments
- Distribution
- Electric Utility (Transmission & Distribution)
- Energy Departments (National Labs)
- Manufacturing (Capital Goods)
- Maritime
- Mining
- Oil & Gas – Upstream/Midstream
- Petrochemical – Downstream
- Offshore
- Power Generation – Coal
- Power Generation – Hydro
- Power Generation – Nuclear
- Power Generation – Solar
- Power Generation – Wind
- Pulp & Paper
- Railroad
- Shipbuilding & Repair

ITI REGISTRATION INFO

Scheduled Training at our Training Centers

Individuals seeking training, as well as companies who require training for a few persons, often find our open enrollment courses meet their needs and budget. Each program is designed to provide a practical approach that will advance knowledge, skill, and confidence, while enhancing safety awareness.

Registration and Payment of Course Fees

Prepayment by check or credit card is required. Payment must accompany the registration. If paying after the program start date, add \$50 to each registration fee.

Prepayment is required to guarantee your seat. Reservations can be made by calling **1.800.727.6355**

<or> online at <https://www.iti.com/register>

<or> by mailing a check or money order to:

USA Programs (US funds) -

P.O. Box 1660, Woodland WA 98674

Canada Programs (Canadian Funds) -

P.O. Box 53618, Ellerslie Rd., Edmonton AB T6X 0P6

Personal Protective Equipment

The Following PPE Gear Is Required for all Practical (Hands-On) Sessions at ITI Training Centers:

- OSHA-approved hard hat*
- Eye protection* (eyeglasses and sunglasses are acceptable)
- Long-sleeved shirt or jacket
- Long pants with no holes or tears
- Low-heeled work boots or work shoes that cover your ankle bones
- Full-fingered work gloves*
- OSHA approved Safety Vest*

*ITI Training Centers will have Hard Hats, Eye Protection, Work Gloves, and Safety Vests available for all students. Students are responsible for providing their own long sleeved shirt/jacket, long pants, and work boots/shoes in order to participate in hands-on training activities.

Students without the required PPE gear will **NOT** be allowed to participate in hands-on activities which may affect their ability to complete or pass the safety training course.

Program Recording

Audio and video recording of programs is prohibited.

Program Time

Programs are held from 8am - 5pm each day.

Lodging

ITI can assist you with locating lodging in the cities where our training centers are located. Just ask your Training Solutions Advisor for more details when registering for your course(s).

Cancellations & Rescheduling Policy

With 30 days' notice, (1) a full refund will be issued less a 5% processing fee, or (2) fees may be applied towards another program held within 1 year. Cancellations' made within 30 days of the program start date, including re-scheduling and "no-shows" will be liable for the entire fee. Substitutions of personnel are permitted. If registering 4 or more participants in any one program, a 60 day notice is required for a full refund, less the processing fee. Please contact ITI for full details. If it is necessary for ITI to cancel a program, you will be notified at least three weeks prior to the class start date. Please purchase airline tickets accordingly and check with your travel agent. ITI will not be responsible for non-refundable travel fees.

Traveling to ITI Training Centers

Woodland Training Center

9428 Old Pacific Hwy, Woodland, WA 98674

Flights should be made into Portland International Airport.

Houston Training Center

5213 Center Street, Pasadena, TX 77505

Flights should be made into William P. Hobby Airport or George Bush Intercontinental Airport in Houston, TX.

Memphis Training Center

1701 Dunn Ave, Memphis, TN 38106

Flights should be made into Memphis International Airport.

Cleveland Training Center

21000 Aerospace Pkwy, Cleveland, OH 44142

Flights should be made into Cleveland Hopkins International Airport.

New Orleans Training Center

279 Thompson Road, Houma, LA 70363

Flights should be made into Louis Armstrong New Orleans International Airport.

Chicago Training Center

9925 S. Industrial Drive, Bridgeview, IL 60455

Flights should be made into Chicago Midway International Airport.

Bartow Training Center

2651 State Rd 60 W, Bartow, FL 33830

Flights should be made into Orlando International Airport.

Hawaii Training Center

94-487 Akoki Street, Suite 213 Waipahu, Hawaii 96797

Flights should be made into Honolulu International Airport.

Anchorage Training Center

5811 Old Seward Highway, Anchorage, AK 99518

Flights should be made into Anchorage International Airport.

Edmonton Training Centre

1803 - 11th Street, Nisku, Alberta T9E 1A8

Flights should be made into Edmonton International Airport.

Scan QR code to read BECHTEL's training success story.



On-Site Training - Host a course at your location

On-site training brings a customized program to your facility. On-site programs are customized for your cranes, equipment, personnel, and any job, corporate or regulatory compliance requirements. ITI Courses include classroom interactive, problem-solving workshops and hands-on sessions. Course pricing indicated in this catalog is for Training Center open-enrollment only and is subject to change. Please check [iti.com/training](https://www.iti.com/training) for current pricing and course information.



ITI OPERATORPRO

*Your full log book of seat time
and work history in your pocket.*

Log equipment operated by
make, model and configuration.

Track and record your activities
including shifts, lifts, inspections,
assembly/disassembly, training,
qualifications and more...




RIGGING SKILLS COURSE PROGRESSION

	ITI Rigging Courses		
	Basic Rigging & Inspection	Intermediate Rigging	Master Rigger (Advanced Rigging)
Basic Hand Signals	Ⓜ	Ⓜ	Ⓜ
Application of Hitch Types	Ⓜ	Ⓜ	Ⓜ
Slings; Limitations, Practices, Hazards and Inspection	Ⓜ	Ⓜ	Ⓜ
Rigging Hardware; Limitations, Practices, Hazards and Inspection	Ⓜ	Ⓜ	Ⓜ
Below-the-Hook Devices; Limitations, Practices, Hazards and Inspection	Ⓜ	Ⓜ	Ⓜ
Knots and Taglines	Ⓜ	Ⓜ	Ⓜ
Types of Slings and Hitches	Ⓜ	Ⓜ	Ⓜ
Center of Gravity		Ⓜ	Ⓜ
Load Weight Estimation		Ⓜ	Ⓜ
Effects of Angles on Rigging Components		Ⓜ	Ⓜ
Load Distribution			Ⓜ
Off-Level Lifting Points			Ⓜ
Chain Hoist / Come-a-long Usage			Ⓜ
Load Turning			Ⓜ
Jack & Rolling			Ⓜ



Scan QR code to  view a course preview video.

ITI Rigging Gear Inspector Level I & II

The Rigging Gear Inspector Course is designed to build and enhance the skills of the student to become a qualified, in-house rigging gear inspector. The course includes classroom sessions and multiple hands-on inspection activities.

Participants learn the removal criteria for wire rope, wire rope slings, synthetic web and round slings, chain slings, rigging hardware and below-the-hook lifting devices according to the applicable federal and provincial regulations as well as ASME standards. Written exams are administered and participants perform hands-on inspections of used and damaged gear to test their knowledge of the criteria learned.

Participants who successfully pass the exams are issued a three-year Level I Qualification. Level II is available to those who meet on-the-job inspection requirements.



ITI Qualified • 2.4 CEUs • 3-4 Days • \$1,695 per registration



ITI Rigging Gear Inspector Level III

The Rigging Gear Inspector Level III Course is designed for those who have attained a Level II Rigging Gear Inspector Qualification from ITI. The course covers product application and troubleshooting, field analysis, field inspection processes, fabrication and quality control, wear and abuse prevention, and problem-solving techniques for wire rope, wire rope slings, synthetic web and round slings, chain slings, rigging hardware and below-the-hook lifting devices.

A written exam will determine participants' knowledge of manufacturing and fabrication techniques, ability to troubleshoot and confirm comprehension of how the regulations and standards are practically applied to daily crane and rigging activities. A five-year Level III Qualification is issued to participants who successfully pass the exam.



ITI Qualified • 2.4 CEUs • 3 Days • \$1,695 per registration



Scan QR code to watch wire rope sling inspection with ITI's Founder Mike Parnell.

Register Today:
800.727.6355
iti.com



INDUSTRIAL TRAINING INTERNATIONAL



ITI Basic Rigging & Inspection

Our 8-hour Basic Rigging & Inspection Course is designed to provide participants with a basic level of knowledge of rigging gear inspection, proper rigging procedures, and load control using typical rigging techniques. ITI's Basic Rigging & Inspection course combines classroom interactive sessions with problem-solving workshops.

Course Subjects:

- Rigging Introduction
- Rigging Inspection
- Rigging Selection
- Load Handling Theory



ITI Qualified • 0.8 CEU • 1 Day • \$495 per registration



ITI Intermediate Rigging

This course is designed for the beginner to intermediate level person whose work assignments involve some rigging activity. All industries and their employees who handle and move loads or products in the course of their daily activities would benefit by taking the ITI Intermediate Rigging Course.

Course Subjects:

- | | |
|----------------------------|-------------------------------|
| • Terms and Definitions | • Load Weight Estimation |
| • D/d Ratio | • Load Factors for Sling Legs |
| • Effects of Shock Loading | • Hitches and Rigging Points |
| • Rigging Gear Inspection | • Rigger's Checklist |
| • Load Control/CG | • Crane Hand Signals |



NOTE: Our ITI Intermediate Rigging Course and NCCCO Rigger Level I Exams and Signalperson Prep Course and Exams are conveniently scheduled back-to-back for those candidates looking to achieve NCCCO Rigger Level I and/or NCCCO Signalperson Certification. The ITI Intermediate Rigging course will help prepare candidates for the Rigger Level I Exams.

An additional ITI Qualification test is available following the final day of the course.

ITI Qualified • 1.6 CEUs • 2 Days • \$895 per registration



Scan QR code to register for one of these courses.

Register Today:
800.727.6355
iti.com



ITI Master Rigger

The ITI Master Rigger Course is designed for participants that have had some exposure (2-10 years) to crane and rigging operations. The course exposes participants to a variety of equipment and applications which include multiple crane lifts, load turning, load drifting with chain hoists, jacking and rolling using mechanical, pneumatic and hydraulic systems, incline planes and managing the center-of-gravity in all three axes. ITI Qualification test available following the final day of the course.

Course Subjects:

- Rigging Gear Inspection
- Load Weight Estimation
- Sling Angles and Tension
- Load Control
- Center of Gravity
- Rigging Blocks & Winch Systems
- Chain Fall Load Drifting
- Levers, Jacks and Rollers
- Inclined Planes
- Spreader Bars
- Multiple Hitch Systems
- Load Turning
- Multiple Crane Lifts
- Signals and Tag Lines
- Off-Level Rigging Points
- Load Distribution
- Load Moving Procedures

ITI Qualified • 3.2 CEUs • 4 Days • \$1,895 per registration



ITI Qualified Signalperson & ITI Qualified Rigger Exams

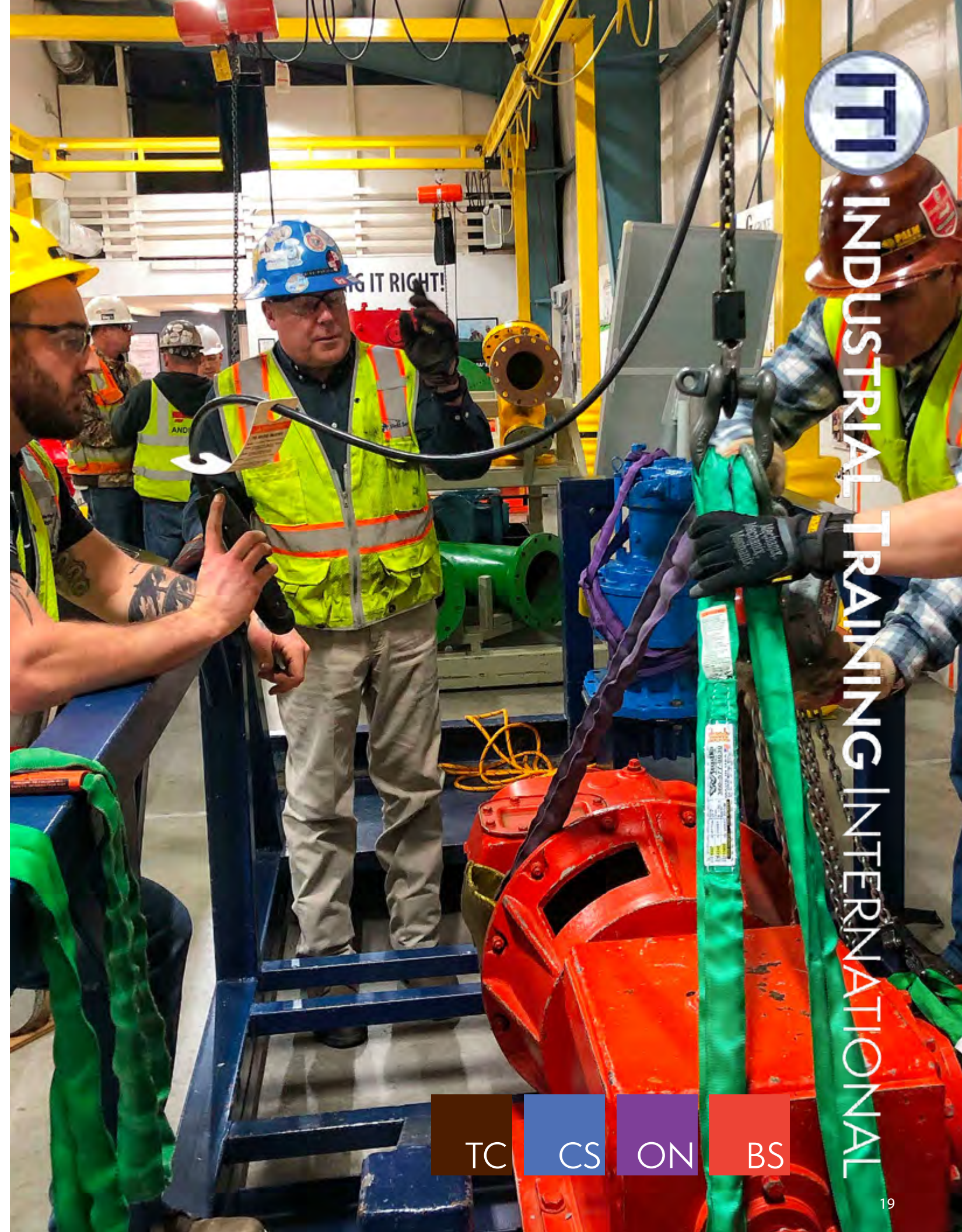
ITI offers optional Signalperson and Rigger Qualification Exams following select Master Rigging and Intermediate Rigging Courses at ITI Training Centers. Written and Practical Exams are administered. Candidates who successfully pass the exams will receive a 5-year ITI Qualification. These qualifications meet the requirements of OSHA.

- ITI Qualified • 0.8 CEU • 1 Day
- Signalperson \$195 per registration
- Rigger \$595 per registration



Scan QR code to see our Master Rigger course in action.

Register Today:
800.727.6355
iti.com



INDUSTRIAL TRAINING INTERNATIONAL



ITI Bull Rigging

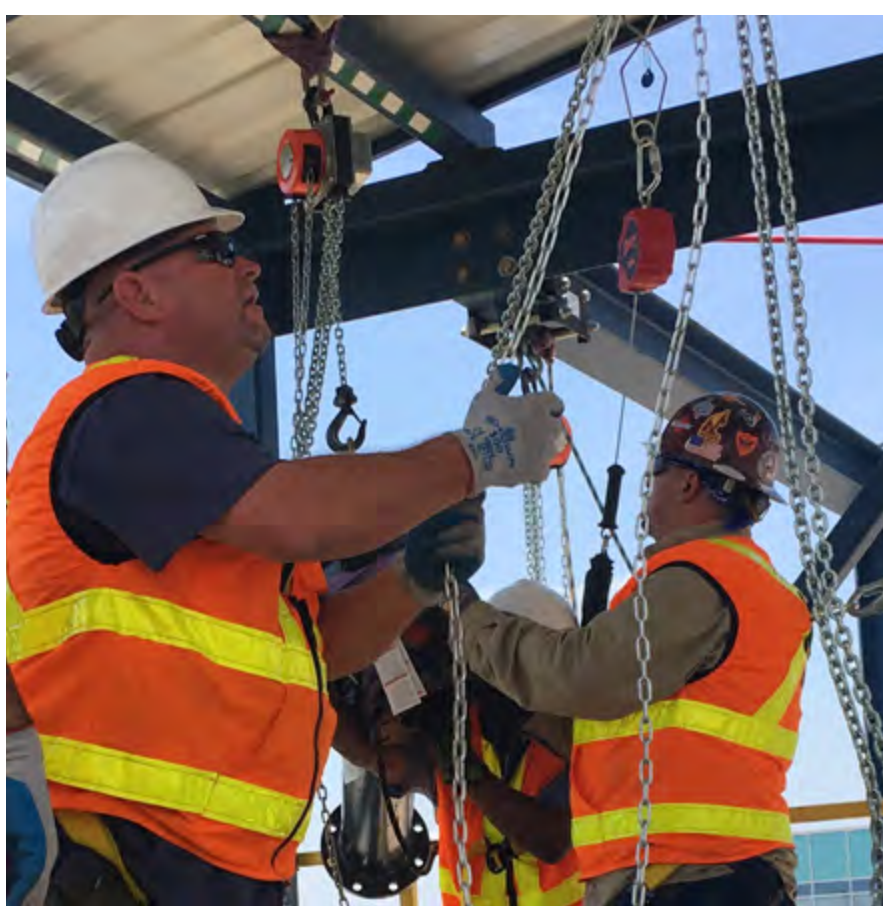
This intermediate to advanced course focuses on planning for and utilization of chain hoists and other similar devices to drift, upright and turn loads. At least half of this course involves hands-on activities moving loads into and out of an engineered structure, vertically through hatchways and through various other openings intended to replicate real world hoisting & drifting challenges.

Course Subjects:

- Chain Hoist & Applicable Rigging Inspection
- Load Distribution
- Center of Gravity Determination
- Sling/Chain Hoist Tension
- Single and Multiple Load Rigging Points
- Multiple Overhead Connection Points
- Load Turning
- Hazard Awareness
- Trolley Beams
- Levers, Jacks, & Industrial Rollers
- Rigging Blocks & Winch Systems
- Incline Planes & Load Moving Procedures

1.6 CEUs • 2 Days • \$1,095 per registration

Host this course at your location.
 Call our Training Solutions Advisors or request a quote online:
iti.com/quote



Scan QR code to watch
ITI Bull Rigging in action.

Register Today:
800.727.6355
iti.com



INDUSTRIAL TRAINING INTERNATIONAL



Certified Rigger Level I & II Prep

The 3-day rigger Prep Course is designed to prepare candidates to take the NCCCO Rigger I and Rigger II Written Certification Exams. Subjects covered are listed below.

The Prep Course is followed by the NCCCO Written and Practical Certification Exams on Days 4 & 5.

2.5 Days • Call or enroll online for current pricing



Certified Rigger Level I Exams

A Certified Rigger Level I can perform simple, repetitive rigging tasks when the load weight, center of gravity, rigging, and rigging configuration are provided or known by the rigger through experience or knowledge of:

- Inspecting rigging before use
- Identifying & attaching rigging with basic knowledge of hitch configurations, capacities, & basic knots
- Recognizing associated hazards
- Signaling operations
- Using various types of rigging equipment and basic hitches and their applications

1 Day • Call or enroll online for current pricing



Certified Rigger Level II Exams

A Certified Rigger Level II can select rigging components and procedures based on rigging capacity. A Rigger Level II can perform the following rigging tasks unsupervised:

- Estimate load weight and center of gravity
- Identify lift points
- Determine and select rigging based on loading
- Perform pre-use inspection of rigging and lift points
- Identify & attach rigging with knowledge of hitch configurations & load angle factors, rigging capacities, & load integrity
- Understand load dynamics and associated hazards

1 Day • Call or enroll online for current pricing

Industrial Training International endorses the national certification program offered by the National Commission for the Certification of Crane Operators (NCCCO) and provides training to prepare candidates for CCO exams.



Scan QR code to register for
CCO Certified Rigger courses.

Register Today:
800.727.6355
iti.com

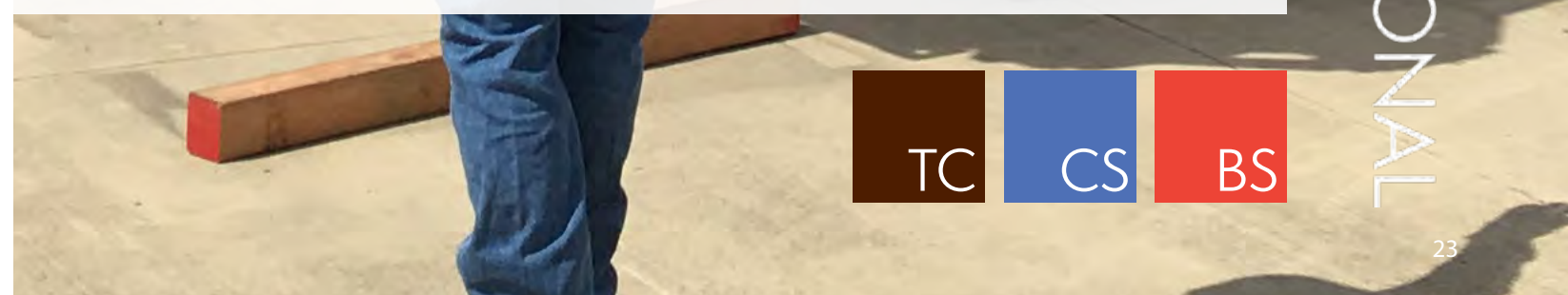


Certified Signalperson Test Prep & Exams

The test prep course prepares candidates to take the NCCCO certification exams. NCCCO certification exams are designed for signalpersons who are trained and who will use hand and voice signals in crane operations.

An NCCCO candidate must pass the NCCCO written and practical examinations to be certified. NCCCO Signalperson certification is valid for five (5) years.

1 Day • Call or enroll online for current pricing





Mobile Crane Operator Certification

This course is designed to prepare candidates to take the core and crane-specific written exams in the NCCCO Operator Certification Series.

Course Subjects

The preparatory course and certification exams sponsored by Industrial Training International are formatted into three parts over a five day period for qualified candidates.

Test Preparation Training (Monday-Wednesday)

This is a classroom only session, with training, sample exams and load chart exercises. The Test Prep Course is not mandatory to take the exams.

Written Exams

The Mobile Crane Operator Core Exam is administered. Additionally, candidates may choose any of the supplemental exams listed below.

Practical Exams

Candidates perform the hands-on practical portion of the Mobile Crane Operator Certification process. Practical exams are provided based on the candidate's category selection.

Test Preparation Course and Certification Exams • 2.4 CEUs • 5 Days
Call or enroll online for current pricing

Certification Categories	Woodland	Memphis	Houston	Tampa	ITI VR*
Telescopic Boom Fixed Cab(TSS)	√		√	√	√
Telescopic Boom Swing Cab(TLL)	√	√	√	√	√
Lattice Boom Truck(LBT)	√		√		√
Lattice Boom Crawler(LBC)	√		√		√

*Exam Prep

Industrial Training International endorses the national certification program offered by the National Commission for the Certification of Crane Operators (NCCCO) and provides training to prepare candidates for CCO exams.



Scan QR code to watch NCCCO Z-Corridor Training Session with ITI Technical Director Joe Kuzar on the ITI VR R/T Crane Sim.

Register Today:
800.727.6355
iti.com



INDUSTRIAL TRAINING INTERNATIONAL

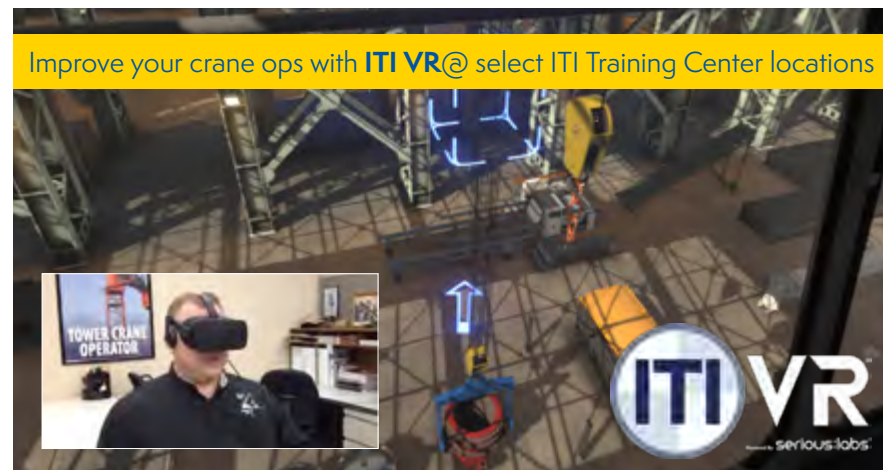




Overhead Crane Operator Certification

The 1 Day Test Prep course prepares candidates to take the NCCCO Written Exam. The course is followed on Day 2 by the NCCCO Written and Practical Exams.

0.8 CEU • 2 Days • \$1,090 per registration @ ITI Training Centers



Tower Crane Operator Certification

The Tower Crane Certification program provides training to prepare candidates for CCO examinations. Training Center courses prepare the student for tower crane, signal person and rigger written and practical examination.

Certification requirements include: written examination, practical examination, physical requirements, and a recertification requirement. All CCO written examinations are in multiple-choice format.

A Certification Card is issued by CCO to those meeting eligibility requirements and passing written and practical exams, demonstrating their fundamental knowledge of, and skill in, safe operation.

Test Preparation Course & Certification Exams
4.0 CEUs • 4 Days • \$2,250 per registration

Industrial Training International endorses the national certification program offered by the National Commission for the Certification of Crane Operators (NCCCO) and provides training to prepare candidates for CCO exams.



Scan QR code to preview the ITI VR OHC Sim in action.

Register Today:
800.727.6355
iti.com

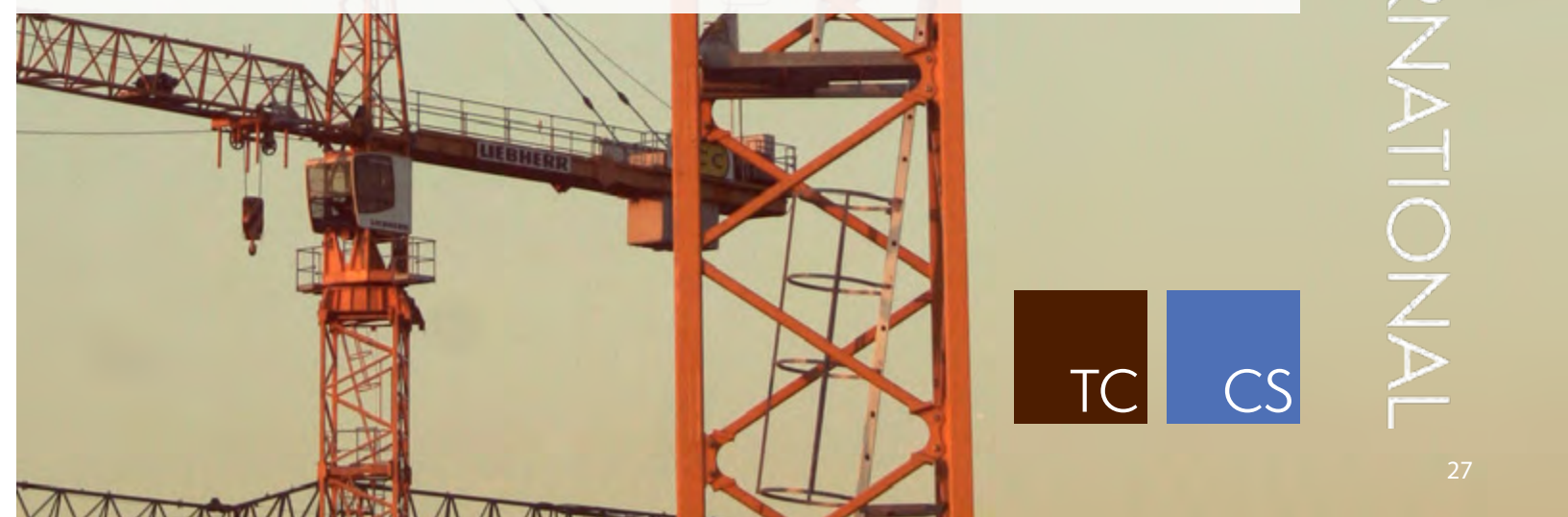


INDUSTRIAL TRAINING INTERNATIONAL



ITI Tower Crane Training is carried out by partner, Morrow Equipment, at their state of the art training center in Salem, Oregon. Courses include management, safety & inspection, technician, and operator certification through NCCCO.

Morrow is the exclusive distributor of Liebherr manufactured tower cranes in the United States, Canada, Australia and New Zealand.



ITI Mobile Crane Operator - Qualified

This course is designed to increase the crane operator's knowledge, skill and proficiency level through classroom and hands-on training.

Students can achieve qualified operator status by successfully completing written and hands-on segments. ITI Qualification is available for Fixed and Swing Cab as well as Lattice Boom Crawler (Houston Training Center only). Additional fees may apply.

This is an excellent prep course for those who wish to take the NCCCO national certification exams. The candidates for the mobile crane operator program are individuals who wish to be apprentices in crane handling, crane maintenance personnel, and current operators who have been trained by "field practices", but not yet exposed to the formal side of crane subjects. This course is also excellent for supervisory persons and lift directors who did not rise through the trades in the seat of a crane.

Course Subjects:

- | | | |
|--------------------------|-------------------------------|----------------------------------|
| • Center of Gravity | • Boom Length / Angle | • Set-up |
| • Radius | • Operating Practices | • Operating Near Power Lines |
| • Rated Strength | • Operator's Responsibilities | • Daily Inspection |
| • Leverage | • Static/Dynamic Load | • Pick and Carry Practices |
| • Load Charts | • Range Diagram | • Applicable federal, state and/ |
| • Side Loading | • Load Weight Calculations | or provincial regulations and |
| • Outrigger Position | • Reeving | standards (ASME, OSHA, |
| • Calculating Capacities | • Gross and Net Loads | CSA, Alberta OH&S) |



ITI Qualified • 4.0 CEUs • 5 Days • \$1,595 per registration

Host this course at your location.

Call our Training Solutions Advisors or request a quote online:

iti.com/quote

ITI Mobile Crane Operator - Initial

This course is designed for those who have little or no experience with mobile crane operation. The course helps establish good operating practices for the participant while gaining seat-time and real-life operating experience.

Participants will conduct pre-operational inspections of hydraulic and/or lattice/conventional cranes. Each will be given individual instruction regarding crane operating basics and will gain seat-time while handling an empty and loaded hook.

4.0 CEUs • 5 Days • \$2,995 per registration



Scan QR code to preview the
ITI VR Rough Terrain Crane Sim.

Register Today:
800.727.6355
iti.com



INDUSTRIAL TRAINING INTERNATIONAL



ITI Boom Truck Operator

Boom truck operator training is designed to increase the operator's knowledge, skill, and proficiency level through classroom workshops and hands-on training. This course can be conducted at client site locations only.

The hands-on session includes operating with live loads. ITI Qualification is available, additional fees may apply.

Course Subjects:

- Daily Inspection
- Communication
- Boom Truck Setup
- Rigging Practices
- Load Chart Interpretation
- Calculating Capacities
- Operator Responsibilities
- Operating Practices
- Operating Near Power Lines
- Conditions that Effect Capacities
- Applicable federal, state and/or provincial regulations and standards

2.4 CEU • 3 Days

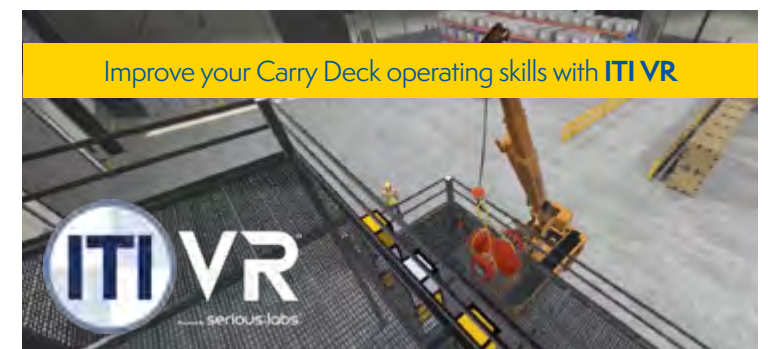
ITI Carrydeck Operator

Carrydeck operator training is designed to increase the operator's knowledge, skill, and proficiency level through classroom workshops and hands-on training. This course can be conducted at client site locations only.

The hands-on session includes operating with live loads. ITI Qualification is available, additional fees may apply.

2.4 CEU • 3 Days

Host this course at your location.
Call our Training Solutions Advisors or request a quote online: iti.com/quote



Scan QR code to preview the ITI VR Carry Deck Sim in action.

Register Today:
800.727.6355
iti.com



ITI Articulating Boom Crane Operator

This course is designed to increase the Articulating Boom Crane operator's knowledge, skill and proficiency level through classroom and hands-on training.

Students can achieve qualified operator status by successfully completing written and hands-on segments. ITI Qualification is available, additional fees may apply.

Course Subjects:

- | | | |
|--------------------------|-------------------------------|---|
| • Center of Gravity | • Operating Practices | • Set-up |
| • Radius | • Operator's Responsibilities | • Operating Near Power Lines |
| • Rated Strength | • Static/Dynamic Load | • Daily Inspection |
| • Leverage | • Range Diagram | • Applicable federal, state and/or provincial regulations and standards (ASME, OSHA, CSA, Alberta OH&S) |
| • Load Charts | • Load Weight Calculations | |
| • Side Loading | • Reeving (as applicable) | |
| • Stabilizer Position | • Gross and Net Loads | |
| • Calculating Capacities | | |

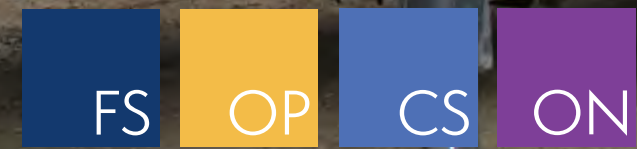
ITI Qualified • 3.2 CEUs • 4 Days

Host this course at your location.
Call our Training Solutions Advisors or request a quote online:
iti.com/quote



Scan QR code for a free e-learning trial from ITI Online.

Register Today:
800.727.6355
iti.com



ITI Mobile Crane Inspector - Qualified

This course is designed to help field personnel identify damage and wear on mobile and pedestal crane components.

It focuses on spotting the problems and identifying the damage that can be discovered through external evaluation. It addresses MESH (mechanical, electrical, structural and hydraulic) components. All mechanics and maintenance personnel who are responsible for their company's crane(s) should attend this course, especially those industries with high use cranes, such as production and construction.

Course Subjects:

- Daily, Monthly and Annual Checklists
- Inspection Requirements
- Boom Inspection
- Wire Rope Inspection
- Upper Rotating Structure
- Lower Structure
- Electrical, Hydraulic and Air Systems
- Safety Devices
- Outriggers
- Testing
- Applicable federal, state and/or provincial regulations and standards
- Understanding Load Charts
- Calculating Load Test Weight Sizes

Hands-On Session

Hands-on inspections of Conventional (Lattice) and Hydraulic Boom Cranes are performed by participants, and a performance evaluation of each inspector will be conducted. A five-year ITI Qualification is issued to participants who successfully pass the written exam and performance evaluations of one or both crane types.

ITI Qualified* • 4.0 CEUs • 5 Days • \$1,995 per registration

**This course prepares the student for Washington State Inspector Certification.*

Host this course at your location.
Call our Training Solutions Advisors or request a quote online:
iti.com/quote



Scan QR code to see this course in action.

Register Today:
800.727.6355
iti.com



ITI Overhead Crane Operator

Overhead crane operator training is offered at ITI Trainind Centers and at client locations upon request. The course is designed to increase the participants' level of knowledge in proper use and pre-operational inspection of overhead cranes. The course utilizes hands-on sessions in which loads are moved by participants using the Operator's Checklist. Course available at Houston, Cleveland & Edmonton Training Centers. ITI Qualification is available.

Course Subjects:

- Inspection Requirements
- Crane Components
- Proper Operating Practices
- Rigging Gear Selection
- Load Control
- Hand Signals
- Applicable Federal, State, Provincial Regulations & Standards

0.8 CEU • 1 Day* • \$495 per registration @ ITI Training Centers

**The course is 12-hours in Alberta and meets the provincial requirements for Overhead Crane Operators including hands-on, load-moving sessions, written exam & practical operating evaluations.*

Host this course at your location.
Call our Training Solutions Advisors or request a quote online:
iti.com/quote



ITI Overhead Crane Inspector

The course is designed to increase the participants' level of knowledge for inspection of overhead lifting devices, which include bridge, gantry, monorail, fixed hoists and jib wall mounts. Overhead crane inspection training has grown rapidly over the past few years in several industries. ITI serves many global leaders with this course including BP and the US Army Corps of Engineers.

The 3-day course consists of classroom workshops and hands-on inspection sessions. Practical learning is incorporated on client's overhead cranes and is followed by a written exam and hands-on inspection evaluations. Course available at Houston & Cleveland Training Centers. ITI Qualification is available.

Course Subjects:

- Hoist Chain Inspection
- Wire Rope Inspection
- Daily, Monthly, Annual Checklists
- Brakes
- Limit Switches
- Structural
- Drive Trains
- Hydraulic and Pneumatic Systems Inspection
- Applicable Federal, State, and Provincial Regulations & ASME Standards

2.4 CEUs • 3 Days • \$1,395 per registration



Scan QR code to preview the ITI VR OHC Sim in action.

Register Today:
800.727.6355
iti.com



INDUSTRIAL TRAINING INTERNATIONAL



ITI Pedestal Crane Operator



ITI's Pedestal Crane Operator course is recommended for client employees who use shore or ship-based pedestal cranes. The participants are introduced to the core subjects listed below in both classroom and hands-on settings, and are tasked with operating assignments that help to establish and/or demonstrate operating proficiency. The 1-day course is provided for cranes at sea while a 3-day course is provided for dock-side cranes. ITI Qualification is available, additional fees may apply.

Course Subjects:

- Daily Pre-Operation Inspection
- Operating Practices
- Lift Considerations
- Hand Signals
- Load Charts
- Personnel Responsibilities
- Applicable Federal, State, and Provincial Regulations & Standards

0.8-2.4 CEUs • 1-3 Days

ITI Pedestal Crane Inspector



This course is recommended for client employees needing to improve their skills, knowledge and abilities as inspectors of pedestal cranes.

The participants are introduced to the core subjects listed below in both classroom and hands-on settings, and are tasked with inspection assignments that help to establish and/or demonstrate inspection proficiency.

Qualification is available. A written exam and hands-on inspections are administered. A three-year ITI qualification is issued to participants who successfully pass the exams.

Course Subjects:

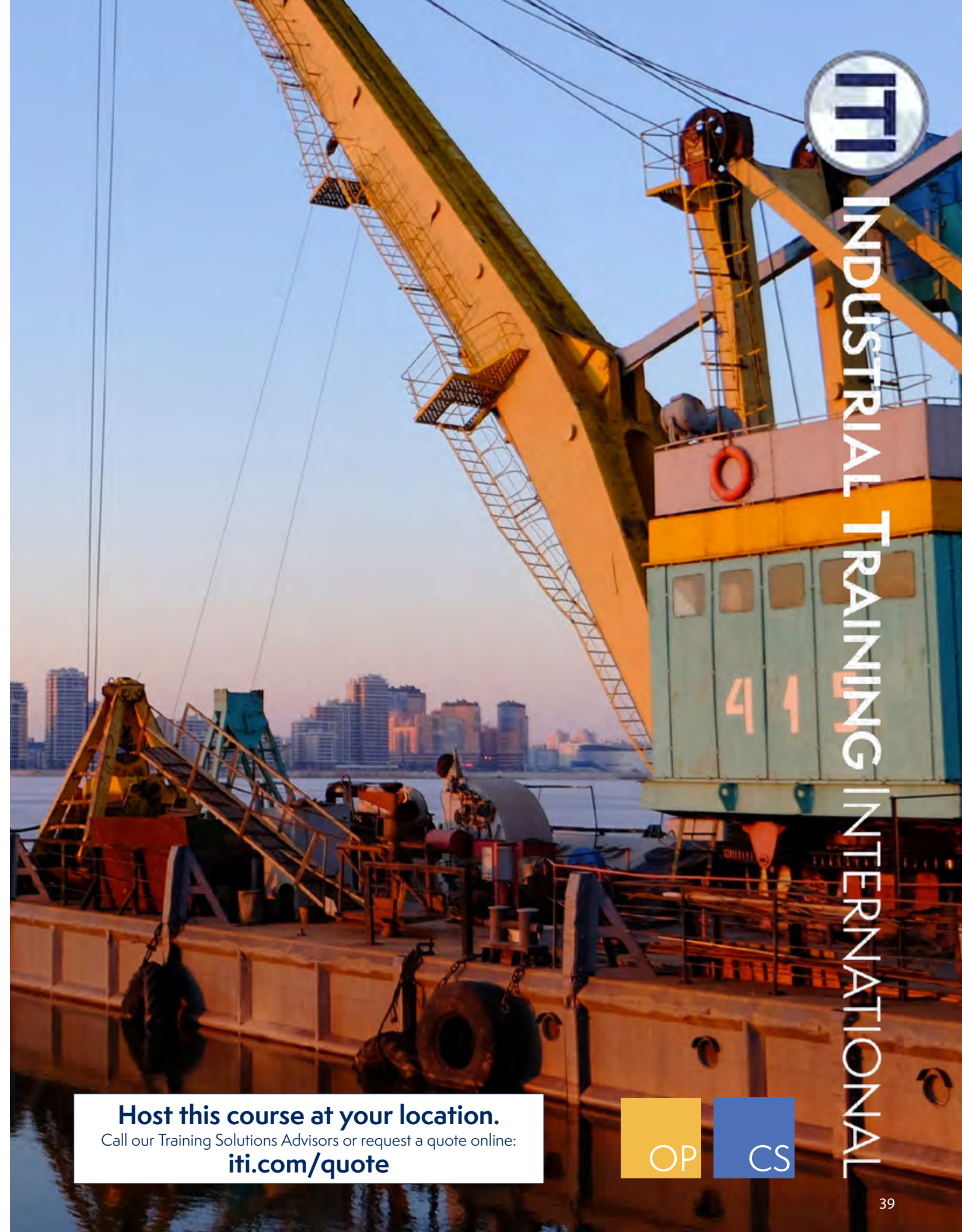
- Lower Structures
- Manufacturer Inspection Requirements
- Safety Devices
- Upper Rotating Structure
- Wire Rope
- Daily, Monthly, Annual Checklists
- Testing Electrical, Hydraulic & Air Systems
- Applicable Federal, State, and Provincial Regulations & ASME Standards

2.4 CEUs • 3 Days



Scan QR code to view the OSHA Checklist for Shipboard Pedestal Crane Safety.

Register Today:
800.727.6355
iti.com



INDUSTRIAL TRAINING INTERNATIONAL

Host this course at your location.
Call our Training Solutions Advisors or request a quote online:
iti.com/quote



ITI Tower Crane Safety & Inspection

Safety and Inspection is a course covering general tower crane knowledge. This 3-day course is aimed at those involved in inspection and safety compliance for tower cranes.

Course Subjects:

- | | | |
|--------------------------------|------------------------------|---|
| • Erection | • Bolting Requirements | • Transport |
| • Dismantling | • Certification Procedures | • Anchorages and Recognizing Electrical Hazards |
| • Climbing Systems | • Load Testing | • Hands-on Field Inspections of Working Tower Crane |
| • Tower Crane Drive Technology | • Tower Crane Communications | |
| • Overload Systems | • Structural Inspection | |
| • Limit Switches | • Foundation Requirements | |

2.4 CEUs • 3 Days • \$1,395 per registration

ITI Tower Crane Technician

Prerequisite: Tower Crane Safety & Inspection, equivalent training or experience, or with Morrow Equipment consent. A 4 ½-day advanced course in tower crane service intended for dedicated service personnel with advanced knowledge of tower crane mechanical and electrical system troubleshooting and repair. The course combines theory and practice using audiovisual presentations with hands-on training utilizing fully functional crane components.

Course Subjects:

- | | | |
|--|--|---|
| • Tower Crane Classifications | • Climbing Support & Anchorage | • Basic Fault Tracing |
| • Configuration and Applications | • Tower Crane Drive Systems | • Crane Controls & Functions |
| • Electrical Power Supply & Grounding | • Load Testing & Movement Limits | • Work Area Limitation Systems |
| • Structural Bolting Installation & Inspection | • Overload Safety Systems | • Safety & Accident Prevention |
| • Top Climbing/Bottom Climbing Procedures Review | • Counterweights & Test Weights | • General Inspection & Maintenance |
| | • Tower Crane Electrical Schematics Basics | • Applicable Safety Standards and Regulations |

4.0 CEUs • 5 Days • \$2,250 per registration

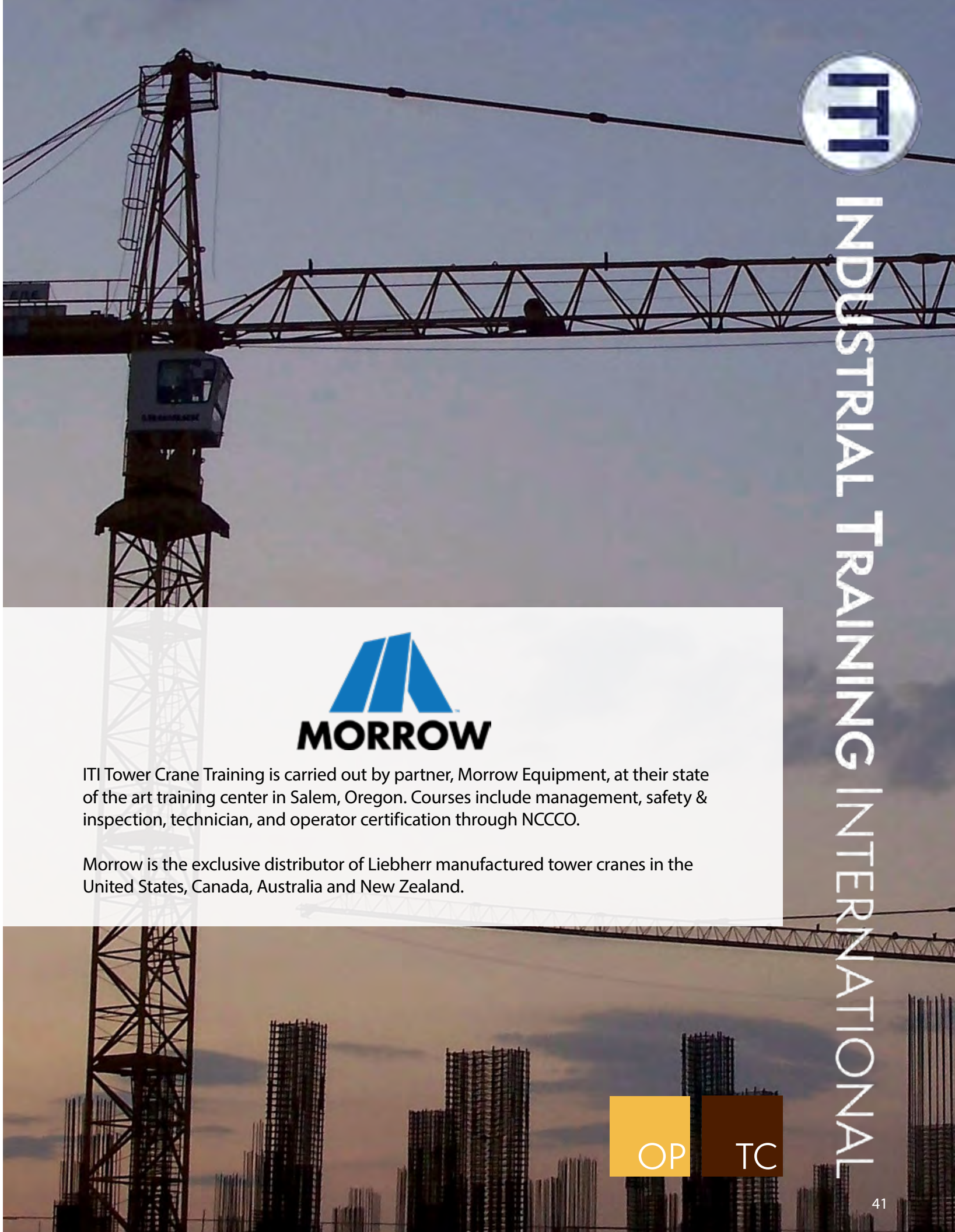
ITI Tower Crane Management

Tower Crane Management is a 2-day course covering a wide range of areas including crane applications, project planning, operation and maintenance requirements.

Course Subjects:

- | | | |
|---|---|---|
| • Tower Crane Applications | • Safety and Accident Prevention | • Rail Traveling Requirements |
| • Tower Crane Configurations | • Electrical Power Supply & Grounding | • Automatic Overload Safety Systems |
| • Project Planning | • Loading and Transport of Crane Components | • Maintenance, Inspection, and Record Keeping |
| • Crane Operations | • Erection and Dismantle Procedures | • Applicable Safety Standards and Regulations |
| • Site Preparation Requirements | • Top Climbing and Crane Anchorage | |
| • Counterweight and Ballasting Requirements | • Bottom Climbing and Crane Support | |

1.6 CEUs • 2 Days • \$995 per registration



INDUSTRIAL TRAINING INTERNATIONAL



ITI Tower Crane Training is carried out by partner, Morrow Equipment, at their state of the art training center in Salem, Oregon. Courses include management, safety & inspection, technician, and operator certification through NCCCO.

Morrow is the exclusive distributor of Liebherr manufactured tower cranes in the United States, Canada, Australia and New Zealand.



ITI Management Awareness Courses are hard hitting, highly focused sessions specifically designed for management/supervisory personnel in the load handling industry.

ITI CRANE & RIGGING MANAGEMENT BOOTCAMP

The Crane & Rigging Management Bootcamp Course will provide all attendees with the foundational knowledge necessary to oversee employees conducting load handling activities.

The session is an ideal learning environment for safety managers/professionals, training managers, and procurement personnel with a limited background when it comes to cranes and rigging.

Course Subjects:

- Lift Director & Site Supervisor
- ASME B30.5
- Load Handling Procedures
- Crane & Rigging Best Practices
- Crane Assembly & Disassembly Director
- 10 Audit Points for Crane & Rigging Operations - HSE Perspective
- OSHA & ASME Overview
- Accident Investigation - Mobile Crane

0.8 CEUs • 1 Day • \$495 per registration

ITI LIFT PLANNING BOOTCAMP

The Lift Planning Bootcamp Course focuses on the process of planning a lift, and the baseline knowledge required to do so according to best practices. Attendees will begin their day focusing on rigging applications, crane load charts, and ASME P30 Standards; culminating with a lift planning workshop where a complete lift plan is developed.

Course Subjects:

- Advanced Rigging Foundations
- Mobile Cranes & Load Charts
- ASME P30 Lift Planning Standard
- Engaging Lift Planning Exercises
- Multi-Crane Lifts
- Lift Plan Development

0.8 CEUs • 1 Day • \$495 per registration

Host this course at your location.

Call our Training Solutions Advisors or request a quote online:

iti.com/quote



Scan QR code to see this course in action.

Register Today:
800.727.6355
iti.com



ITI Lift Director & Critical Lift Planning



The Lift Director portion of the course addresses the responsibilities of a Lift Director as identified by 29CFR1926.1400 (Federal OSHA), ASME P30.1 Lift Planning and ASME B30.5 Mobile and Locomotive Cranes. Participants are provided an outline of the recommended knowledge and skill subjects that should be mastered in order to become a competent Lift Director. An optional hands-on session is offered at client-sites that involves the completion of a lift plan.

The Critical Lift portion of the course focuses on the process of assessing risks, the compilation of crane and rigging data, crane operating areas, rigging methods, a safety checklist, personnel competencies and assignments, a proposed sequence of events, contingency plans and other category items as recommended in ASME P30.1 Lift Planning. Participants will formulate a series of lift plans based on multiple scenarios and then will be challenged to solve a variety of problem-solving workshops related to partially completed plans (quiz format).

Course Subjects:

- ASME B30.5 Roles & Responsibilities
- OSHA requirements for Lift Director
- ASME P30.1 Lift Planning
- Site Preparation
- Traffic Control
- Crane Load Chart Data
- Rigging Capacity Data
- Hazard Recognition
- Risk Assessment
- Multiple Crane Lifts
- Lift Data Sheet
- Load Schematic, Rigging Method and Selection
- Pre-Lift Safety Checklist
- Crane Set-up Schematic
- Load Travel Path and Personnel Placement
- Load Handling Sequence and Procedures
- Engaging Lift Planning Exercises

2.4 CEUs • 3 Days • \$1,695 per registration

Host this course at your location.

Call our Training Solutions Advisors or request a quote online:

iti.com/quote



Scan QR code to register for Lift Director courses.

Register Today:
800.727.6355
iti.com



ITI Accident Investigation:

Cranes, Rigging and Material Handling Operations

ITI's Accident Investigation course is designed for accident investigators, safety and regulatory professionals, crane, rigging and material handling supervisors, and safety committee members.

The Accident Investigation course begins with a series of workshops that focus on three disciplines related to load handling; crane operations, rigging activities and forklift operations.

Problem-solving workshops help solidify participants' understanding and knowledge concerning equipment set-up, proper application, capacity information, inspection, hazard recognition and operational safety.

Participants will then be exposed to three full-sized accident sites. Each site is accompanied by a document packet complete with eye witness accounts, sheriff's report, machine/equipment data, and other vital information. Teams will evaluate the sites and document packet, then formulate a 'root cause' summary based on the facts and their findings. Additionally, the team will compile a list of possible violations and propose a recommended corrective action plan.

Course Subjects:

- Understanding Equipment & Rigging Operations
- Instruction on How to Conduct an Accident Investigation
- Operator/Rigger Assignments & Performance
- Fact vs. Fiction
- Leading Cause Identification
- Violations of Corporate and Jurisdictional Requirements
- Corrective Action Plan
- Applicable federal, state and/or provincial regulations and ASME standards

2.4 CEUs • 3 Days • \$1,995 per registration

Host this course at your location.

Call our Training Solutions Advisors or request a quote online:

iti.com/quote



Scan QR code to see how the Accident Investigation scene at the ITI Woodland Training Center was created.

Register Today:
800.727.6355
iti.com



ITI Crane Assembly & Disassembly Director



The A/D (Mobile Crane) course addresses the assembly and disassembly of lattice boom cranes as required by 29 CFR 1926 Subpart CC. As a supplement to this course, ITI also involves participants in the A/D work related to jibs and boom extensions for hydraulic, telescoping type cranes.

This course is a blend of classroom and hands-on activities. Addressed in the classroom are the manufacturer's warnings, prohibitions, cautions and hazards, the OSHA A/D regulations, the recommended corporate A/D procedures and the step-by-step assembly and disassembly instructions necessary for a crew to perform the erection or dismantling of a lattice boom. The participants work in teams to perform A/D work during the hands-on sessions by reviewing the A/D field instructions, conduct a pre-job briefing addressing the hazards, tasks and sequence of events, followed by actual A/D activities. A post-job review and inspection will be conducted to ensure all required steps have been accomplished for the activity.

Course Subjects:

- Components and Configuration
- Lattice Boom A/D
- Boom Extension/Jib A/D (best practices)
- Manufacturer's Prohibitions, Warnings and Instructions
- Recommended Corporate Guidelines
- OSHA 29 CFR 1926 Subpart CC Assembly & Disassembly
- Applicable federal, state and/or provincial regulations and ASME standards

Hands-On Session

Over 50% of the course involves assembly and/or disassembly sessions that focus first on lattice boom cranes and secondly on hydraulic cranes with jibs or boom extensions.

1.6 CEUs • 2 Days • \$1,095 per registration

Host this course at your location.

Call our Training Solutions Advisors or request a quote online:

iti.com/quote



Scan QR code to register for this course.

Register Today:
800.727.6355
iti.com



INDUSTRIAL TRAINING INTERNATIONAL



ITI Project Execution for Lift Planners & Rigging Engineers

This Course is 2 days in duration and will be held at scheduled times throughout the year, in various cities throughout the world. It offers students an in-person, interactive option to collaborate and develop engineered lift plans alongside other students and ITI Rigging Engineering Instructors.

Course Outline:

This course is "project-oriented" and involves minimal instructor lecturing. Students will select from several project scenarios to execute in an array of working environments and load choices.

Students are encouraged to utilize the computer systems that they are familiar with (e.g. AutoCAD, LiftPlanner, 3D Lift Plan).

Projects will be designed for execution with a variety of load handling equipment including:

- Mobile Cranes
- Tower Cranes
- Telescopic Hydraulic Gantry Systems
- Hydraulic Jacks
- Strand Jacks
- Modular Lift Towers
- Hydraulic Skidding Systems
- Industrial Rolling Systems
- Winches & Blocks
- Hydraulic Platform Trailers
- Spreader Beams & Complex Lifting Arrangements
- Customized Load Handling Equipment

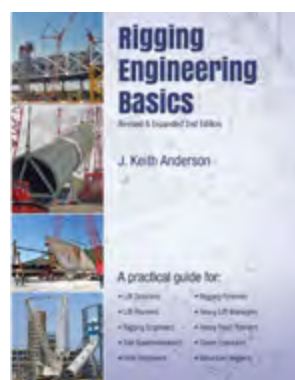
1.6 CEUs • 2 Days • \$1,995 US



Host this course at your location.

Call our Training Solutions Advisors or request a quote online:

iti.com/quote



Rigging Engineering Basics, 2nd Edition is available for purchase via the [ITI Bookstore](#). Newly revised & expanded, Rigging Engineering Basics is a practical guide for Lift Directors, Lift Planners, Rigging Engineers, Site Superintendents, Field Engineers, Rigging Foremen, Heavy Lift Managers, Heavy Haul Planners, Crane Operators, and Advanced Riggers. This book is intended to inform people planning rigging operations and point them in the direction of best practices, to alert them to pitfalls and how to avoid them, and to instruct in how to do certain basic rigging engineering tasks.



Scan QR code to host this course at your location.

Register Today:
800.727.6355
iti.com



INDUSTRIAL TRAINING INTERNATIONAL



J. Keith Anderson
CEng MIMechE | BDES
Program Manager

- Chief Rigging Engineer, Bechtel
- Author, *Rigging Engineering Basics*
- Formerly with Mammoet and Sarens

FS

TC

CS

BS

ITI Forklift & Telescopic Handler Operator

All participants will be required to prove proficiency in pre-op inspection, control knowledge, machine handling, load retrieval and placement, working on inclines and parking.

ITI Qualified • 0.8 CEU • 1 Day



ITI Forklift Inspector

The Forklift Inspector Course is conducted at client sites on client equipment and is designed to increase the inspector's knowledge, skill, and proficiency level through classroom and hands-on training. Those inspectors who successfully pass would receive an ITI qualification that is valid for 3 years (in-house inspections only).

ITI Qualified • 0.8 CEU • 1 Day



ITI Skid Steer Operator

The skid steer training curriculum requires participants to conduct practical and theoretical demonstration of the knowledge that they've gained from the course including pre-operational inspection and efficient operational activities. In this course, work assignments must be performed using the loader bucket while traveling and turning with the bucket loaded and empty. The skid steer operator course also includes a three year ITI Qualification issued to participants who successfully pass written and practical exams.

ITI Qualified • 0.8 CEU • 1 Day



ITI Aerial Work Platform Operator

The Aerial Lift Work Platform Course is designed to increase the participants' knowledge of proper and efficient elevating work platform operations through classroom and hands-on training. A written exam and hands-on evaluations are administered. Those operators who successfully pass the written and practical exams will receive an ITI qualification that is valid for three years.

ITI Qualified • 0.8 CEU • 1 Day



ITI Aerial Work Platform Inspector

The Aerial Lift Inspector Course is designed to increase the inspector's knowledge, skill, and proficiency level through classroom and hands-on training. A written exam and hands-on evaluations are administered. Those inspectors who successfully pass receive an ITI qualification that is valid for 3 years (in-house inspections only).

ITI Qualified • 0.8 CEU • 1 Day



Scan QR code to host these courses at your location.

For more information:
800.727.6355
iti.com



ITI Qualified Fabricator

The Fabricator course consists of theoretical and hands-on instruction followed by fabricator qualification.

This course ranges from 1-3 days based on the learning objectives of the client and the items that they fabricate. Classroom instruction, procedures and documentation are followed by hands-on demonstration and training. Written and practical exams are administered to qualify fabricators.

Course Outline:

- Wire Rope Socketing: Zinc or Resin
- Wire Rope Slings: Hand Splice
- Wire Rope Slings: Mechanical Splice
- Alloy Chain Slings: Welded
- Alloy Chain Slings: Mechanical Assembly
- Synthetic Web Slings: Flat & Round
- Fiber Rope Slings: Hand Splice
- Metal Mesh Slings
- Proof/Pull Testing
- Applicable federal, state and/or provincial regulations and ASME standards



ITI Qualified • 1.6 CEUs +/- • 1-3 Days

Host these courses at your location.
Call our Training Solutions Advisors or request a quote online:
iti.com/quote



Scan QR code to host this course at your location.

For more information:
800.727.6355
iti.com

WHERE TO DEMO ITI VR

★ Woodland, WA
ITI Headquarters
and Training Center
 ★ Edmonton, AB
Serious Labs HQ
 ★ Chicago, IL
ITI Training Center
 ★ Cleveland, OH
ITI Training Center
 ★ Lenexa, KS
Brodersen HQ
 ★ Houston, TX
ITI Training Center
 ★ Tampa, FL
ITI Training Center

★ Birmingham, UK
ITI UK
 ★ Saudi Arabia
NexGen Skills Training



OVERHEAD GANTRY CRANE



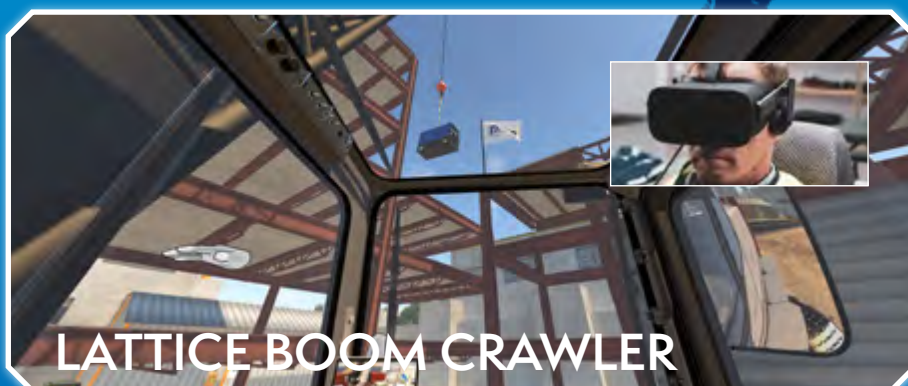
CAB FORWARD R/T CRANE



TOWER CRANE



BOOM TRUCK



LATTICE BOOM CRAWLER

Schedule a demo at these locations
iti.com/vr/demo



Onsite demos available on request at
iti.com/vr/request-a-demo



ITI BOOKSTORE



HOT SELLERS

New & Updated Resources

Receive **10%** off your order when you use the code **WEBSTORE** during checkout!



TRAINING MATERIALS

Expand Your Working Knowledge.



ESSENTIALS

Top Industry Resources

POSTERS & TOOLS

Work Smarter, Work SAFE



FIELD REFERENCE CARDS

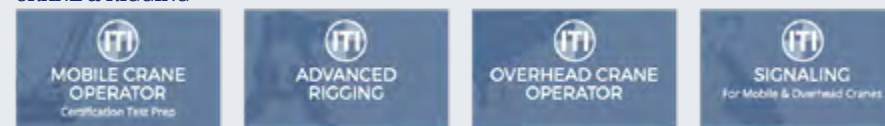
Industry Trusted & Tested Information, Right at your Fingertips

INSPECTION FORMS

To Keep Work Safe and Organized.



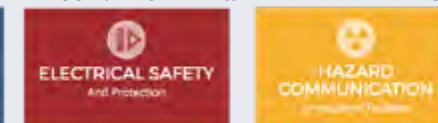
CRANE & RIGGING



RIGGING ENGINEERING



INDUSTRIAL SAFETY & PLANT MAINTENANCE



ITI ONLINE

Interactive Learning With No Boundries.

- BOOKS
- REFERENCE CARDS
- DVD/CD TRAINING
- POSTERS
- LIFT PLANS
- TOOLS
- FIELD EQUIPMENT
- SAFETY PRODUCTS
- DECALS
- APPAREL

888.567.8472 | store.iti.com



**INDUSTRIAL TRAINING
INTERNATIONAL**

9428 Old Pacific Hwy, Woodland, WA 98674
800.727.6355 iti.com



Scan QR code

to download the PDF version of this Catalog to your smartphone.